

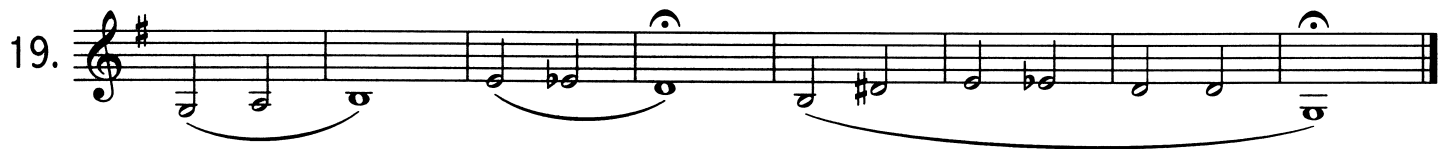
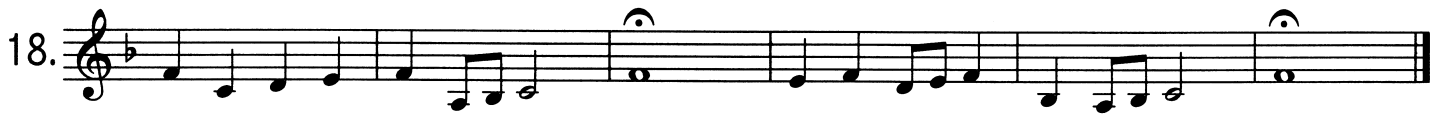
# BAILEY BAND WARM UPS

Bass Clarinet

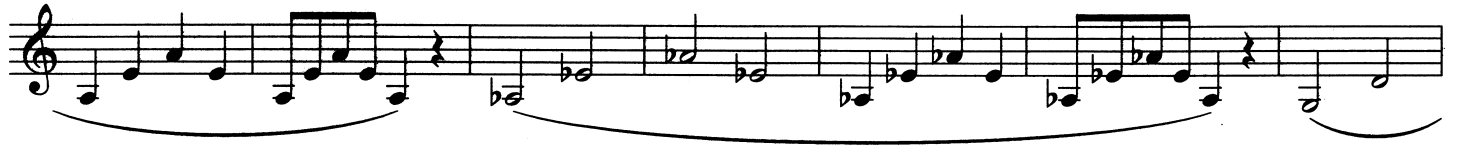
LONG TONES 8-19-18

The image displays five exercises for Bass Clarinet, each consisting of two staves of music. The exercises are numbered 1 through 5. Each exercise is written in 4/4 time and consists of a sequence of long tones (half notes) with various accidentals and rests. Exercise 1 starts on G4, moves to A4 (sharp), B4, C5, D5, E5, and F5. Exercise 2 starts on G4, moves to A4 (sharp), B4, C5, D5, E5, and F5. Exercise 3 starts on G4, moves to A4 (sharp), B4, C5, D5, E5, and F5. Exercise 4 starts on G4, moves to A4 (flat), B4, C5, D5, E5, and F5. Exercise 5 starts on G4, moves to A4 (flat), B4, C5, D5, E5, and F5. Each exercise concludes with a final long tone on G4.





25.  Musical staff 1 of exercise 25, starting with a treble clef and a key signature of one sharp (F#). The staff contains a sequence of notes: C4, D4, E4, F#4, G4, A4, B4, C5, B4, A4, G4, F#4, E4, D4, C4. A slur covers the first seven notes, and another slur covers the last seven notes.

 Musical staff 2 of exercise 25, continuing from the first staff. The notes are: C4, D4, E4, F#4, G4, A4, B4, C5, B4, A4, G4, F#4, E4, D4, C4. A slur covers the first seven notes, and another slur covers the last seven notes. Musical staff 3 of exercise 25, continuing from the second staff. The notes are: C4, D4, E4, F#4, G4, A4, B4, C5, B4, A4, G4, F#4, E4, D4, C4. A slur covers the first seven notes, and another slur covers the last seven notes. Musical staff 4 of exercise 25, continuing from the third staff. The notes are: C4, D4, E4, F#4, G4, A4, B4, C5, B4, A4, G4, F#4, E4, D4, C4. A slur covers the first seven notes, and another slur covers the last seven notes.

26.  Musical staff 1 of exercise 26, starting with a treble clef and a key signature of one sharp (F#). The staff contains a sequence of notes: C4, D4, E4, F#4, G4, A4, B4, C5, B4, A4, G4, F#4, E4, D4, C4. A slur covers the first seven notes, and another slur covers the last seven notes.

 Musical staff 2 of exercise 26, continuing from the first staff. The notes are: C4, D4, E4, F#4, G4, A4, B4, C5, B4, A4, G4, F#4, E4, D4, C4. A slur covers the first seven notes, and another slur covers the last seven notes. Musical staff 3 of exercise 26, continuing from the second staff. The notes are: C4, D4, E4, F#4, G4, A4, B4, C5, B4, A4, G4, F#4, E4, D4, C4. A slur covers the first seven notes, and another slur covers the last seven notes.