

Foundations for Superior Performance Warm-Ups and Technique for Band

by Richard Williams and Jeff King

A comprehensive and sequential book of warm-ups, scales, technical patterns, chord studies, tuning exercises, and chorales for concert band.

Designed to organize the daily rehearsal and advance the performance level of the ensemble.

Practical and efficient exercises in all twelve major keys developed in the classroom.

Table of Contents

Section 1: Warm-Ups

• Concert F Around the Band	2
• Articulation Exercises	3
• Long Tones	4-5
• Warm-Up Sets 1 through 4	6-9

Section 2: Technique

Major and minor scales, mini-scales, scale patterns, scales in thirds, intervals, triads, and chord studies.

• Concert B \flat	10-11
• Concert F	12-13
• Concert C	14-15
• Concert G	16-17
• Concert D	18
• Concert A	19
• Concert E	20
• Concert B	21
• Concert G \flat	22-23
• Concert D \flat	24-25
• Concert A \flat	26-27
• Concert E \flat	28-29

Section 3: Chorales and Tuning Exercises

Interval tuning, chord tuning, and chorales

• Concert B \flat	30-31
• Concert F	32-33
• Concert E \flat	34-35
• Concert C	36
• Concert c minor	37
• Concert G	38
• Concert g minor	39
• Concert A \flat	40

Appendix:

• Circle of Fifths	41
• One Octave Scales and Arpeggios	42
• Full Range Scales	44
• Chromatic Scales	46
• Major Arpeggios and Inversions	48

ISBN 0-8497-7010-6

©1997 Neil A. Kjos Music Company, 4380 Jutland Drive, San Diego, California 92117
International copyright secured. All rights reserved. Printed in U.S.A.

Warning! These arrangements are protected by copyright law. To copy or reproduce them by any method is an infringement of the copyright law. Anyone who reproduces copyrighted matter is subject to substantial penalties and assessments for each infringement.

B♭ Trumpet Fingering Chart

(Notes on gray background are pedal tones -- younger players should use 1 2 3 for all pedal tones.)

C	C# D♭	D	D# E♭	E	F
Open	1 2 3	1 3	2 3	1 2	1

F# G♭	G	G# A♭	A	A# B♭	B
1 2 3	1 3	2 3	1 2 or 3	1	2

C	C# D♭	D	D# E♭	E	F
Open	1 2 3	1 3	2 3	1 2 or 3	1

F# G♭	G	G# A♭	A	A# B♭	B
2 or 1 2 3	Open or 1 3	2 3	1 2 or 3	1 or 1 2 3	2 or 1 3

C	C# D♭	D	D# E♭	E	F
Open or 2 3	1 2 or 3	1 or 1 3	2 or 2 3	Open or 1 2	1

F# G♭	G	G# A♭	A	A# B♭	B
2	Open or 1 3	2 3	1 2 or 3	1	2

C	C# D♭	D	D# E♭	E	F
Open	2 or 1 2	Open or 1	2	Open	1

Concert F Around The Band

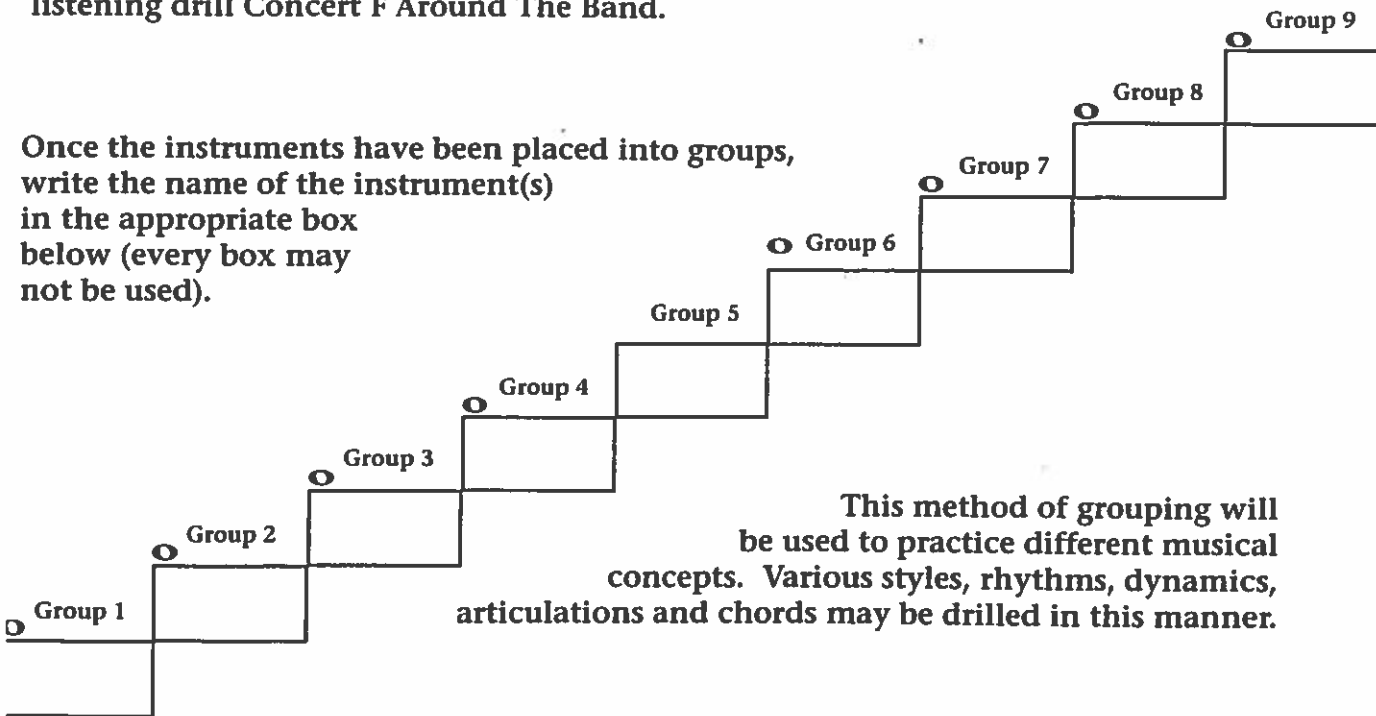
Each instrument will play concert F in their middle register. As a trumpeter, you will need to transpose the concert F in measure one to your instrument's pitch in measure two.

The transposition for cornet/trumpet is up a major second.



Your director will divide the band into various sections or groups for the listening drill Concert F Around The Band.

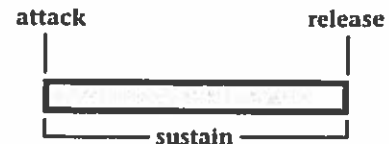
Once the instruments have been placed into groups, write the name of the instrument(s) in the appropriate box below (every box may not be used).



This method of grouping will be used to practice different musical concepts. Various styles, rhythms, dynamics, articulations and chords may be drilled in this manner.

As you play the exercise, keep the following concepts in mind:

- match the primary parts of each note (attack-sustain-release)
- work for a smooth shape to each note (no bumps in the sound)
- hand off tenuto notes (full value) without creating "holes" between the attacks
- match intonation, intensity, volume, tone quality, and the "body of sound"
- be aware of the different colors (timbres) of the instrument groups and their location in the room
- listen from the bottom groups and balance low-middle-high



Articulation Exercises

Articulations: A Study in Styles

Four connected quarter-notes (tenuto). The sound of one note "touches" the next note.

Four quarter-notes in "lifted" style. The attack is the same as tenuto, but the end of the note is tapered.

Four quarter-notes "lifted and short" (staccato). Separated and detached (half full value).

Eighth-notes in connected style.

Eighth-notes in lifted and short style.

Eighth-note triplets in connected style.

Eighth-note triplets in a detached style (bounced).

Sixteenth-notes in a connected style.

Articulation Exercise on Concert F

Long Tones

Concert F Descending

1

First staff of exercise 1: Treble clef, C major, descending eighth notes. Fingerings: 1, 2, 3, 4, 5, 6, 7.

Second staff of exercise 1: Treble clef, C major, descending eighth notes. Fingerings: 8, 9, 10, 11, 12, 13, 14.

2

Exercise 2: Treble clef, C major, descending eighth notes. Fingerings: 1, 2, 3, 4.

Long Tone 1

1a

First staff of exercise 1a: Treble clef, C major, descending eighth notes. Fingerings: 1, 2, 3, 4, 5, 6, 7.

Second staff of exercise 1a: Treble clef, C major, descending eighth notes. Fingerings: 8, 9, 10, 11, 12, 13, 14.

1b

First staff of exercise 1b: Treble clef, C major, descending eighth notes. Fingerings: 1, 2, 3, 4, 5, 6, 7.

Second staff of exercise 1b: Treble clef, C major, descending eighth notes. Fingerings: 8, 9, 10, 11, 12, 13, 14.

1c

First staff of exercise 1c: Treble clef, C major, descending eighth notes. Fingerings: 1, 2, 3, 4, 5.

Second staff of exercise 1c: Treble clef, C major, descending eighth notes. Fingerings: 6, 7, 8, 9, 10.

1d

First staff of exercise 1d: Treble clef, C major, descending eighth notes. Fingerings: 1, 2, 3, 4, 5, 6.

Second staff of exercise 1d: Treble clef, C major, descending eighth notes. Fingerings: 7, 8, 9, 10, 11, 12.

Long Tone 2

Musical notation for Long Tone 2, consisting of four staves of music. The notes are numbered 1 through 26. The first staff contains notes 1-7, the second 8-14, the third 15-21, and the fourth 22-26. The notes are connected by slurs, indicating a continuous line.

Long Tone 3

3a Intervals of a minor 2nd

Intervals of a major 2nd

Musical notation for Long Tone 3a, intervals of a minor 2nd and major 2nd, notes 1-8. The first four notes (1-4) are connected by a slur and represent intervals of a minor 2nd. The next four notes (5-8) are connected by a slur and represent intervals of a major 2nd.

Intervals of a minor 3rd

Intervals of a major 3rd

Musical notation for Long Tone 3a, intervals of a minor 3rd and major 3rd, notes 9-16. The first four notes (9-12) are connected by a slur and represent intervals of a minor 3rd. The next four notes (13-16) are connected by a slur and represent intervals of a major 3rd.

Intervals of a perfect 4th

Intervals of an augmented 4th

Musical notation for Long Tone 3a, intervals of a perfect 4th and augmented 4th, notes 17-24. The first four notes (17-20) are connected by a slur and represent intervals of a perfect 4th. The next four notes (21-24) are connected by a slur and represent intervals of an augmented 4th.

Intervals of a perfect 5th

Musical notation for Long Tone 3a, intervals of a perfect 5th, notes 25-28. The four notes (25-28) are connected by a slur and represent intervals of a perfect 5th.

3b Intervals of a minor 2nd

Intervals of a major 2nd

Intervals of a minor 3rd

Musical notation for Long Tone 3b, intervals of a minor 2nd, major 2nd, and minor 3rd, notes 1-6. The first two notes (1-2) are connected by a slur and represent intervals of a minor 2nd. The next two notes (3-4) are connected by a slur and represent intervals of a major 2nd. The last two notes (5-6) are connected by a slur and represent intervals of a minor 3rd.

Intervals of a major 3rd

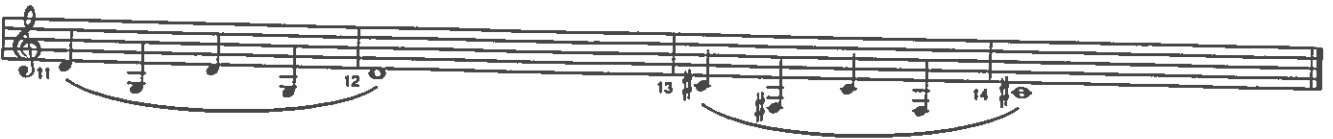
Intervals of a perfect 4th

Intervals of an augmented 4th

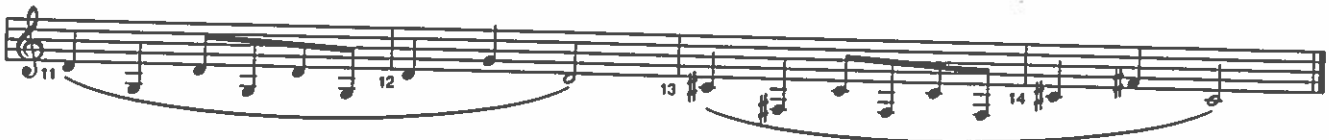
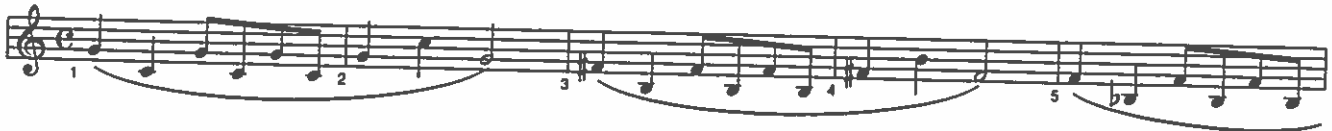
Musical notation for Long Tone 3b, intervals of a major 3rd, perfect 4th, and augmented 4th, notes 7-12. The first two notes (7-8) are connected by a slur and represent intervals of a major 3rd. The next two notes (9-10) are connected by a slur and represent intervals of a perfect 4th. The last two notes (11-12) are connected by a slur and represent intervals of an augmented 4th.

Warm-Up Set 1

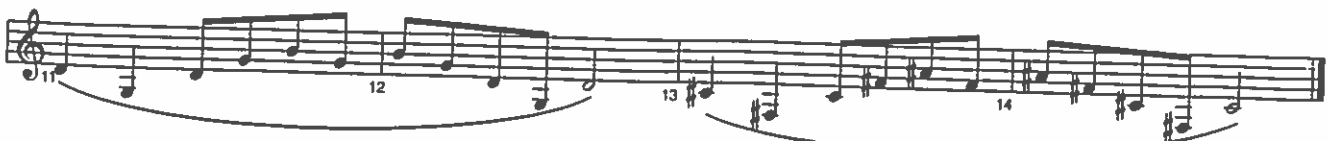
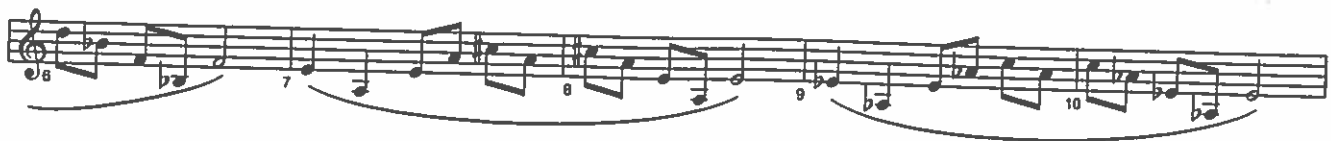
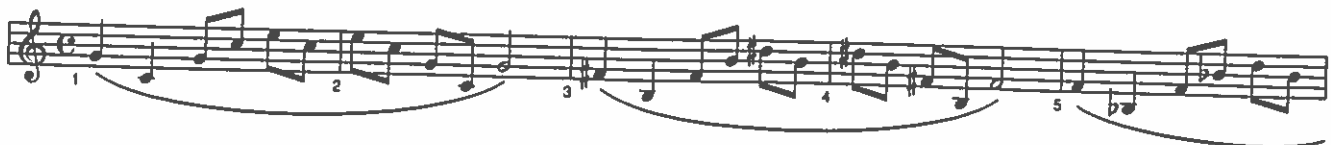
Options 1, 2, & 3



Option 4



Option 5



Options 1, 2, & 3

Musical notation for Options 1, 2, & 3, consisting of three staves. The first staff (treble clef, C major) contains measures 1-5 with notes: 1 (C4), 2 (D4), 3 (E4), 4 (F4), 5 (G4). The second staff (treble clef, B-flat major) contains measures 6-10 with notes: 6 (Bb3), 7 (Cb4), 8 (Db4), 9 (Eb4), 10 (Fb4). The third staff (treble clef, B-flat major) contains measures 11-14 with notes: 11 (Bb3), 12 (Cb4), 13 (Db4), 14 (Eb4).

Option 4

Musical notation for Option 4, consisting of three staves. The first staff (treble clef, C major) contains measures 1-5 with notes: 1 (C4), 2 (D4), 3 (E4), 4 (F4), 5 (G4). The second staff (treble clef, B-flat major) contains measures 6-10 with notes: 6 (Bb3), 7 (Cb4), 8 (Db4), 9 (Eb4), 10 (Fb4). The third staff (treble clef, B-flat major) contains measures 11-14 with notes: 11 (Bb3), 12 (Cb4), 13 (Db4), 14 (Eb4).

Option 5

Musical notation for Option 5, consisting of three staves. The first staff (treble clef, C major) contains measures 1-5 with notes: 1 (C4), 2 (D4), 3 (E4), 4 (F4), 5 (G4). The second staff (treble clef, B-flat major) contains measures 6-10 with notes: 6 (Bb3), 7 (Cb4), 8 (Db4), 9 (Eb4), 10 (Fb4). The third staff (treble clef, B-flat major) contains measures 11-14 with notes: 11 (Bb3), 12 (Cb4), 13 (Db4), 14 (Eb4).

Warm-Up Set 3

Options 1, 2, & 3

Options 1, 2, & 3

Musical notation for Options 1, 2, & 3, consisting of three staves of music. The first staff contains measures 1 through 5, the second staff contains measures 6 through 10, and the third staff contains measures 11 through 14. The notation includes treble clefs, a common time signature, and various rhythmic values (quarter, eighth, and sixteenth notes) with slurs and accents.

Option 4

Option 4

Musical notation for Option 4, consisting of three staves of music. The first staff contains measures 1 through 5, the second staff contains measures 6 through 10, and the third staff contains measures 11 through 14. The notation includes treble clefs, a common time signature, and various rhythmic values (quarter, eighth, and sixteenth notes) with slurs and accents.

Option 5

Option 5

Musical notation for Option 5, consisting of three staves of music. The first staff contains measures 1 through 5, the second staff contains measures 6 through 10, and the third staff contains measures 11 through 14. The notation includes treble clefs, a common time signature, and various rhythmic values (quarter, eighth, and sixteenth notes) with slurs and accents.

Options 1, 2, & 3 - fingerings indicated in parenthesis

1 (1-2-3) 2 (1-3) 3 4 (2-3) 5

6 (1-2) 7 (1) 8 9 10

11 (2) 12 (Open) 13 14

Option 4 - fingerings indicated in parenthesis

1 (1-2-3) 2 (1-3) 3 4 (2-3) 5

6 (1-2) 7 (1) 8 9 10

11 (2) 12 (Open) 13 14

Option 5 - fingerings indicated in parenthesis

1 (1-2-3) 2 (1-3) 3 4

5 (2-3) 6 (1-2) 7 8

9 (1) 10 (2) 11 12

13 (Open) 14

Technical Exercises in the Key of C (Concert B \flat)

Major Scale

Musical notation for the Major Scale exercise in C major. It consists of two staves. The first staff contains an ascending scale from C4 to C5. The second staff contains a descending scale from C5 to C4. The exercise concludes with a whole note chord of C major (C-E-G) in the right hand and a whole note bass note of C in the left hand.

Natural Minor

Musical notation for the Natural Minor scale exercise in C minor. It consists of two staves. The first staff contains an ascending scale from C4 to C5. The second staff contains a descending scale from C5 to C4. The exercise concludes with a whole note chord of C minor (C-E \flat -G \flat) in the right hand and a whole note bass note of C in the left hand.

Harmonic Minor

Musical notation for the Harmonic Minor scale exercise in C minor. It consists of two staves. The first staff contains an ascending scale from C4 to C5. The second staff contains a descending scale from C5 to C4. The exercise concludes with a whole note chord of C harmonic minor (C-E \flat -G \flat -B \flat) in the right hand and a whole note bass note of C in the left hand.

Melodic Minor

Musical notation for the Melodic Minor scale exercise in C minor. It consists of two staves. The first staff contains an ascending scale from C4 to C5. The second staff contains a descending scale from C5 to C4. The exercise concludes with a whole note chord of C melodic minor (C-E \flat -F \flat -G \flat) in the right hand and a whole note bass note of C in the left hand.

Mini-Scale & Tonic Arpeggio

Musical notation for the Mini-Scale & Tonic Arpeggio exercise in C major. It consists of two staves. The first staff contains a mini-scale (C4-D4-E4-F4-G4-A4-B4-C5) with a slur over the notes. The second staff contains a tonic arpeggio (C4-E4-G4-C5) with a slur over the notes.

Scale Pattern 1 *articulations:

Musical notation for Scale Pattern 1 in C major. It consists of two staves. The first staff contains a continuous eighth-note pattern starting on C4 and ascending to C5. The second staff contains a continuous eighth-note pattern starting on C4 and descending to C4.

*Scale Pattern 2**

Musical notation for Scale Pattern 2* in C major, 4/4 time. The piece consists of two staves. The upper staff features a melodic line with eighth-note patterns, and the lower staff provides a steady accompaniment of eighth notes.

*Scale in Thirds**

Musical notation for Scale in Thirds* in C major, 4/4 time. The upper staff plays a scale in thirds, while the lower staff plays a scale in eighth notes.

Interval Study

Musical notation for Interval Study in C major, 4/4 time. The piece consists of a single staff with eighth-note patterns.

Triads of the C Scale

Musical notation for Triads of the C Scale in C major, 4/4 time. The piece consists of a single staff showing seven triads labeled I through vii^o.

*Chord Study 1**

Musical notation for Chord Study 1* in C major, 4/4 time. The piece consists of two staves with six measures, each containing a different chord.

Chord Study 2 - articulations:

Musical notation for Chord Study 2 - articulations in C major, 4/4 time. The piece consists of two staves with five measures, each containing a different chord with articulation marks.

Technical Exercises in the Key of G (Concert F)

Major Scale

Musical notation for the Major Scale exercise in G major. It consists of two staves in treble clef with a key signature of one sharp (F#) and a common time signature (C). The melody is written in the upper staff, and the accompaniment is in the lower staff. The exercise is divided into four measures, with a fermata over the final two notes of the fourth measure.

Natural Minor

Musical notation for the Natural Minor scale exercise in G minor. It consists of two staves in treble clef with a key signature of two flats (Bb, Eb) and a common time signature (C). The melody is written in the upper staff, and the accompaniment is in the lower staff. The exercise is divided into four measures, with a fermata over the final two notes of the fourth measure.

Harmonic Minor

Musical notation for the Harmonic Minor scale exercise in G minor. It consists of two staves in treble clef with a key signature of two flats (Bb, Eb) and a common time signature (C). The melody is written in the upper staff, and the accompaniment is in the lower staff. The exercise is divided into four measures, with a fermata over the final two notes of the fourth measure.

Melodic Minor

Musical notation for the Melodic Minor scale exercise in G minor. It consists of two staves in treble clef with a key signature of two flats (Bb, Eb) and a common time signature (C). The melody is written in the upper staff, and the accompaniment is in the lower staff. The exercise is divided into four measures, with a fermata over the final two notes of the fourth measure.

Mini-Scale & Tonic Arpeggio

Musical notation for the Mini-Scale & Tonic Arpeggio exercise in G major. It consists of two staves in treble clef with a key signature of one sharp (F#) and a common time signature (C). The exercise is divided into four measures. The first measure contains a mini-scale (G-A-B-A-G), and the subsequent three measures contain tonic arpeggios (G-B-D-G). The first measure has a fermata over the final note.

Scale Pattern 1 *articulations:

Musical notation for Scale Pattern 1 in G major. It consists of two staves in treble clef with a key signature of one sharp (F#) and a common time signature (C). The exercise is divided into four measures. The first measure contains a mini-scale (G-A-B-A-G), and the subsequent three measures contain tonic arpeggios (G-B-D-G). The first measure has a fermata over the final note.

*Scale Pattern 2**

Musical notation for Scale Pattern 2* in G major, 4/4 time. The right hand plays a sequence of eighth notes: G4-A4-B4-C5-D5-E5-F#5-G5, followed by a descending sequence: G5-F#5-E5-D5-C5-B4-A4-G4. The left hand plays a steady eighth-note accompaniment: G3-A3-B3-C4-D4-E4-F#4-G4.

*Scale in Thirds**

Musical notation for Scale in Thirds* in G major, 4/4 time. The right hand plays a sequence of eighth notes in thirds: G4-A4, B4-C5, D5-E5, F#5-G5, G5-F#5, E5-D5, C5-B4, A4-G4. The left hand plays a steady eighth-note accompaniment: G3-A3-B3-C4-D4-E4-F#4-G4.

Interval Study

Musical notation for Interval Study in G major, 4/4 time. The right hand plays a sequence of eighth notes: G4-A4-B4-C5-D5-E5-F#5-G5, followed by a descending sequence: G5-F#5-E5-D5-C5-B4-A4-G4. The left hand plays a steady eighth-note accompaniment: G3-A3-B3-C4-D4-E4-F#4-G4.

Triads of the G Scale

Musical notation for Triads of the G Scale in G major, 4/4 time. The right hand plays a sequence of eighth notes for each triad: I (G4-A4-B4), II (B4-C5-D5), III (C5-B4-A4), IV (G4-A4-B4), V (G4-A4-B4), VI (G4-A4-B4), VII^o (G4-A4-B4). The left hand plays a steady eighth-note accompaniment: G3-A3-B3-C4-D4-E4-F#4-G4.

*Chord Study 1**

Musical notation for Chord Study 1* in G major, 4/4 time. The right hand plays a sequence of eighth notes: 1 (G4-A4-B4), 2 (B4-C5-D5), 3 (C5-B4-A4), 4 (G4-A4-B4), 5 (G4-A4-B4), 6 (G4-A4-B4). The left hand plays a steady eighth-note accompaniment: G3-A3-B3-C4-D4-E4-F#4-G4.

Chord Study 2 - articulations:

Musical notation for Chord Study 2 - articulations in G major, 4/4 time. The right hand plays a sequence of eighth notes with triplets: 3 (G4-A4-B4), 3 (B4-C5-D5), 3 (C5-B4-A4), 3 (G4-A4-B4), 3 (G4-A4-B4), 3 (G4-A4-B4), 3 (G4-A4-B4), 3 (G4-A4-B4). The left hand plays a steady eighth-note accompaniment: G3-A3-B3-C4-D4-E4-F#4-G4.

Technical Exercises in the Key of D (Concert C)

Major Scale

Natural Minor

Harmonic Minor

Melodic Minor

Mini-Scale & Tonic Arpeggio

Scale Pattern 1 *articulations:

*Scale Pattern 2**

Two staves of music in G major, 4/4 time. The top staff features a melodic line with eighth-note patterns, and the bottom staff provides a bass line with eighth-note accompaniment.

*Scale in Thirds**

Two staves of music in G major, 4/4 time. The top staff shows a melodic line with intervals of a third, and the bottom staff shows a bass line with intervals of a third.

Interval Study

A single staff of music in G major, 4/4 time, focusing on interval training with eighth-note patterns.

Triads of the D Scale

A single staff of music in G major, 4/4 time, showing seven triads labeled I through vii^o with their corresponding notes.

*Chord Study 1**

Two staves of music in G major, 4/4 time. The top staff has a melodic line with six numbered phrases, and the bottom staff has a bass line with eighth-note accompaniment.

Chord Study 2 - articulations:

Two staves of music in G major, 4/4 time. The top staff features a melodic line with triplets and slurs, and the bottom staff features a bass line with eighth-note accompaniment.

Technical Exercises in the Key of A (Concert G)

Major Scale

Natural Minor

Harmonic Minor

Melodic Minor

Mini-Scale & Tonic Arpeggio

Scale Pattern 1 *articulations:

*Scale Pattern 2**

Musical notation for Scale Pattern 2* in A major, 4/4 time. The piece consists of two staves. The upper staff features a melodic line with eighth-note patterns, while the lower staff provides a steady eighth-note accompaniment.

*Scale in Thirds**

Musical notation for Scale in Thirds* in A major, 4/4 time. The upper staff shows a melodic line with intervals of a third, and the lower staff has a consistent eighth-note accompaniment.

Interval Study

Musical notation for Interval Study in A major, 4/4 time. The single staff contains a sequence of eighth-note intervals across the scale.

Triads of the A Scale

Musical notation for Triads of the A Scale in A major, 4/4 time. The piece is enclosed in a rectangular box and shows seven triads labeled I through vii^o with their respective chord diagrams.

*Chord Study 1**

Musical notation for Chord Study 1* in A major, 4/4 time. The upper staff shows six chords with fingerings 1 through 6, and the lower staff has a steady eighth-note accompaniment.

Chord Study 2 - articulations:

Musical notation for Chord Study 2 - articulations in A major, 4/4 time. The upper staff features triplets and slurs, while the lower staff has a steady eighth-note accompaniment.

Technical Exercises in the Key of E (Concert D)

Major Scale

This section contains four staves of musical notation, each representing a different scale in the key of E (concert D). The scales are: Major Scale, Natural Minor, Harmonic Minor, and Melodic Minor. Each staff begins with a treble clef, a key signature of three sharps (F#, C#, G#), and a common time signature (C). The scales are written in a four-measure format, with the first measure being a whole rest. The second and third measures contain eighth-note runs, and the fourth measure contains a whole note chord.

Mini-Scale & Tonic Arpeggio

This section contains two staves of musical notation. The top staff features a melodic line with eighth-note runs and a final half-note chord. The bottom staff features a rhythmic pattern of eighth notes, likely representing a tonic arpeggio or accompaniment.

Scale in Thirds - articulations:

This section contains two staves of musical notation. The top staff shows a melodic line with eighth-note runs and a final half-note chord. The bottom staff shows a rhythmic pattern of eighth notes, likely representing a tonic arpeggio or accompaniment.

Trumpets only-extended major scale

This section contains two staves of musical notation. The top staff shows a melodic line with eighth-note runs and a final half-note chord. The bottom staff shows a rhythmic pattern of eighth notes, likely representing a tonic arpeggio or accompaniment.

Major Scale

Natural Minor

Harmonic Minor

Melodic Minor

Mini-Scale & Tonic Arpeggio

Scale in Thirds - articulations:

Technical Exercises in the Key of F# (Concert E)

Major Scale

Musical notation for the Major Scale in E major (Concert E). The piece is in 4/4 time. The first staff contains the treble clef and the second staff contains the bass clef. The key signature has four sharps (F#, C#, G#, D#). The scale is written in a single melodic line across both staves, with a fermata over the final two notes.

Natural Minor

Musical notation for the Natural Minor scale in E minor. The piece is in 4/4 time. The first staff contains the treble clef and the second staff contains the bass clef. The key signature has no sharps or flats. The scale is written in a single melodic line across both staves, with a fermata over the final two notes.

Harmonic Minor

Musical notation for the Harmonic Minor scale in E minor. The piece is in 4/4 time. The first staff contains the treble clef and the second staff contains the bass clef. The key signature has no sharps or flats. The scale is written in a single melodic line across both staves, with a fermata over the final two notes.

Melodic Minor

Musical notation for the Melodic Minor scale in E minor. The piece is in 4/4 time. The first staff contains the treble clef and the second staff contains the bass clef. The key signature has no sharps or flats. The scale is written in a single melodic line across both staves, with a fermata over the final two notes.

Mini-Scale & Tonic Arpeggio

Musical notation for the Mini-Scale & Tonic Arpeggio in E major. The piece is in 4/4 time. The first staff contains the treble clef and the second staff contains the bass clef. The key signature has four sharps (F#, C#, G#, D#). The exercise consists of a short scale in the treble clef and a tonic arpeggio in the bass clef, both with a fermata over the final notes.

Scale in Thirds - articulations:

Musical notation for the Scale in Thirds in E major. The piece is in 4/4 time. The first staff contains the treble clef and the second staff contains the bass clef. The key signature has four sharps (F#, C#, G#, D#). The exercise consists of a scale in the treble clef and a scale in the bass clef, both with articulation marks (accents) over the notes.

Major Scale

Musical notation for the Major Scale in C major, 4/4 time. The first staff contains the treble clef, a key signature of one flat (Bb), and a common time signature (C). The second staff contains the bass clef. The scale is written in two parts: an ascending line and a descending line, both in quarter notes. The ascending line starts on middle C (C4) and goes up to C5. The descending line starts on C5 and goes down to C4. The final two notes of the descending line are held for two measures.

Natural Minor

Musical notation for the Natural Minor scale in C minor, 4/4 time. The first staff contains the treble clef, a key signature of two flats (Bb, Eb), and a common time signature (C). The second staff contains the bass clef. The scale is written in two parts: an ascending line and a descending line, both in quarter notes. The ascending line starts on middle C (C4) and goes up to C5. The descending line starts on C5 and goes down to C4. The final two notes of the descending line are held for two measures.

Harmonic Minor

Musical notation for the Harmonic Minor scale in C minor, 4/4 time. The first staff contains the treble clef, a key signature of two flats (Bb, Eb), and a common time signature (C). The second staff contains the bass clef. The scale is written in two parts: an ascending line and a descending line, both in quarter notes. The ascending line starts on middle C (C4) and goes up to C5, with a natural sign under the F4 note. The descending line starts on C5 and goes down to C4. The final two notes of the descending line are held for two measures.

Melodic Minor

Musical notation for the Melodic Minor scale in C minor, 4/4 time. The first staff contains the treble clef, a key signature of two flats (Bb, Eb), and a common time signature (C). The second staff contains the bass clef. The scale is written in two parts: an ascending line and a descending line, both in quarter notes. The ascending line starts on middle C (C4) and goes up to C5, with natural signs under the F4 and Eb4 notes. The descending line starts on C5 and goes down to C4. The final two notes of the descending line are held for two measures.

Mini-Scale & Tonic Arpeggio

Musical notation for the Mini-Scale & Tonic Arpeggio in C major, 4/4 time. The first staff contains the treble clef, a key signature of one flat (Bb), and a common time signature (C). The second staff contains the bass clef. The scale is written in two parts: an ascending line and a descending line, both in quarter notes. The ascending line starts on middle C (C4) and goes up to C5. The descending line starts on C5 and goes down to C4. The final two notes of the descending line are held for two measures.

Scale in Thirds - articulations:

Musical notation for the Scale in Thirds in C major, 4/4 time. The first staff contains the treble clef, a key signature of one flat (Bb), and a common time signature (C). The second staff contains the bass clef. The scale is written in two parts: an ascending line and a descending line, both in quarter notes. The ascending line starts on middle C (C4) and goes up to C5. The descending line starts on C5 and goes down to C4. The final two notes of the descending line are held for two measures.

Technical Exercises in the Key of A \flat (Concert G \flat)

Major Scale

Musical notation for the Major Scale exercise in A-flat major (Concert G-flat). It consists of two staves. The first staff contains the ascending and descending melodic lines. The second staff contains the harmonic accompaniment, featuring a steady eighth-note bass line and chords in the right hand.

Natural Minor

Musical notation for the Natural Minor scale exercise in A-flat major (Concert G-flat). It consists of two staves. The first staff contains the ascending and descending melodic lines. The second staff contains the harmonic accompaniment, similar to the major scale exercise.

Harmonic Minor

Musical notation for the Harmonic Minor scale exercise in A-flat major (Concert G-flat). It consists of two staves. The first staff contains the ascending and descending melodic lines. The second staff contains the harmonic accompaniment, similar to the major scale exercise.

Melodic Minor

Musical notation for the Melodic Minor scale exercise in A-flat major (Concert G-flat). It consists of two staves. The first staff contains the ascending and descending melodic lines. The second staff contains the harmonic accompaniment, similar to the major scale exercise.

Mini-Scale & Tonic Arpeggio

Musical notation for the Mini-Scale & Tonic Arpeggio exercise in A-flat major (Concert G-flat). It consists of two staves. The first staff contains a melodic line with slurs and accents. The second staff contains a steady eighth-note bass line.

Scale Pattern 1 *articulations:

Musical notation for Scale Pattern 1 exercise in A-flat major (Concert G-flat). It consists of two staves. The first staff contains a melodic line with slurs and accents. The second staff contains a steady eighth-note bass line.

Scale Pattern 2*

Musical notation for Scale Pattern 2* in A-flat major, 4/4 time. The piece consists of two staves. The upper staff features a melodic line with eighth-note patterns, and the lower staff provides a steady accompaniment of eighth notes.

Scale in Thirds*

Musical notation for Scale in Thirds* in A-flat major, 4/4 time. The upper staff shows a scale of thirds, while the lower staff provides a rhythmic accompaniment of eighth notes.

Interval Study

Musical notation for Interval Study in A-flat major, 4/4 time. The single staff contains a sequence of eighth-note intervals across the scale.

Triads of the A \flat Scale

Musical notation for Triads of the A \flat Scale in A-flat major, 4/4 time. The piece shows seven triads labeled I through vii^o, each with a specific fingering indicated by numbers 1, 2, and 3.

Chord Study 1*

Musical notation for Chord Study 1* in A-flat major, 4/4 time. The piece features six measures, each with a specific chord and a corresponding eighth-note pattern in the upper staff.

Chord Study 2 - articulations:

Musical notation for Chord Study 2 - articulations in A-flat major, 4/4 time. The piece consists of two staves. The upper staff features eighth-note patterns with articulation marks (accents) and fingerings (1-5). The lower staff provides a steady accompaniment of eighth notes.

Technical Exercises in the Key of E \flat (Concert D \flat)

Major Scale

Four staves of musical notation showing the scales in the key of E \flat (Concert D \flat):

- Major Scale:** E \flat - F - G - A - B \flat - C - D - E \flat
- Natural Minor:** E \flat - F - G - A - B \flat - C - D \flat - E \flat
- Harmonic Minor:** E \flat - F - G - A - B \flat - C - D \flat - E \flat (with a natural sign over the final E \flat)
- Melodic Minor:** E \flat - F - G - A - B \flat - C - D \flat - E \flat (with a natural sign over the final E \flat)

Mini-Scale & Tonic Arpeggio

Two staves of musical notation for the Mini-Scale & Tonic Arpeggio exercise. The top staff shows a mini-scale with slurs and accents, and the bottom staff shows the tonic arpeggio.

Scale Pattern 1 * articulations: $\overset{1}{\text{trill}}$ $\overset{2}{\text{trill}}$ $\overset{3}{\text{trill}}$ $\overset{4}{\text{trill}}$ $\overset{5}{\text{trill}}$ $\overset{6}{\text{trill}}$ $\overset{7}{\text{trill}}$ $\overset{8}{\text{trill}}$

Two staves of musical notation for Scale Pattern 1, featuring articulations (trills) on the notes of the scale.

Trumpets only-extended scale

Two staves of musical notation for the Trumpets only-extended scale exercise, showing an extended range scale with a slur.

Scale Pattern 2*

Two staves of music in E-flat major, 4/4 time. The top staff features a melodic line with eighth-note patterns, and the bottom staff provides a bass line with eighth-note accompaniment.

Scale in Thirds*

Two staves of music in E-flat major, 4/4 time. The top staff shows a scale of thirds, and the bottom staff shows a scale of sixths.

Interval Study

A single staff of music in E-flat major, 4/4 time, containing a sequence of intervals for study.

Triads of the E \flat Scale

A single staff of music in E-flat major, 4/4 time, showing the seven triads of the scale labeled I through vii^o.

Chord Study 1*

Two staves of music in E-flat major, 4/4 time. The top staff has a melodic line with six numbered measures, and the bottom staff has a bass line with eighth-note accompaniment.

Chord Study 2 - articulations:

Two staves of music in E-flat major, 4/4 time. The top staff features a melodic line with triplets and articulations, and the bottom staff has a bass line with eighth-note accompaniment.

Scale Pattern 2*

Musical notation for Scale Pattern 2* in B-flat major, 4/4 time. The piece consists of two staves. The upper staff features a melodic line with eighth-note patterns, and the lower staff provides a bass line with a similar eighth-note accompaniment.

Scale in Thirds*

Musical notation for Scale in Thirds* in B-flat major, 4/4 time. The upper staff contains a melodic line of eighth-note triplets, while the lower staff provides a bass line of eighth-note accompaniment.

Interval Study

Musical notation for Interval Study in B-flat major, 4/4 time. The upper staff contains a melodic line of eighth-note intervals, and the lower staff provides a bass line of eighth-note accompaniment.

Triads of the B \flat Scale

Musical notation for Triads of the B \flat Scale in B-flat major, 4/4 time. The upper staff shows seven triads labeled I through VII $^{\circ}$, with the lower staff providing a bass line of eighth-note accompaniment.

Chord Study 1*

Musical notation for Chord Study 1* in B-flat major, 4/4 time. The upper staff features six chords numbered 1 through 6, and the lower staff provides a bass line of eighth-note accompaniment.

Chord Study 2 - articulations:

Musical notation for Chord Study 2 - articulations in B-flat major, 4/4 time. The upper staff features six chords numbered 1 through 6, and the lower staff provides a bass line of eighth-note accompaniment.

Technical Exercises in the Key of F (Concert E \flat)

Major Scale

Four staves of musical notation showing the scales in the key of F (Concert E \flat):

- Major Scale:** Treble clef, key signature of two flats (F and C \flat), common time signature. The scale is written in a single line.
- Natural Minor:** Treble clef, key signature of three flats (F, C \flat , and G \flat), common time signature. The scale is written in a single line.
- Harmonic Minor:** Treble clef, key signature of three flats (F, C \flat , and G \flat), common time signature. The scale is written in a single line, with a natural sign under the seventh degree (F \sharp).
- Melodic Minor:** Treble clef, key signature of three flats (F, C \flat , and G \flat), common time signature. The scale is written in a single line, with natural signs under the sixth and seventh degrees (C \natural and F \sharp).

Mini-Scale & Tonic Arpeggio

Two staves of musical notation for the Mini-Scale & Tonic Arpeggio exercise in the key of F (Concert E \flat):

- The top staff contains a melodic line with eighth-note runs and a final half-note cadence.
- The bottom staff contains a bass line with eighth-note runs and a final half-note cadence.

Scale Pattern 1 *articulations: $\overset{1}{\text{trill}}$ $\overset{2}{\text{trill}}$ $\overset{3}{\text{trill}}$ $\overset{4}{\text{trill}}$ $\overset{5}{\text{trill}}$ $\overset{6}{\text{trill}}$ $\overset{7}{\text{trill}}$ $\overset{8}{\text{trill}}$

Two staves of musical notation for Scale Pattern 1 with articulations in the key of F (Concert E \flat):

- The top staff shows a melodic line with eighth-note runs and articulations (trills) marked above the notes.
- The bottom staff shows a bass line with eighth-note runs.

Trumpets only-extended scale

Two staves of musical notation for the Trumpets only-extended scale in the key of F (Concert E \flat):

- The top staff shows a melodic line with eighth-note runs and a long slur over the final notes.
- The bottom staff shows a bass line with eighth-note runs.

*Scale Pattern 2**

Musical notation for Scale Pattern 2* in F major, 4/4 time. The piece consists of two staves. The upper staff features a melodic line with eighth-note patterns, and the lower staff provides a harmonic accompaniment with eighth-note chords.

*Scale in Thirds**

Musical notation for Scale in Thirds* in F major, 4/4 time. The upper staff shows a scale of thirds, and the lower staff shows a corresponding accompaniment.

Interval Study

Musical notation for Interval Study in F major, 4/4 time. The piece consists of a single staff with a sequence of intervals.

Triads of the F Scale

Musical notation for Triads of the F Scale in F major, 4/4 time. The piece consists of a single staff showing seven triads labeled I through vii^o.

*Chord Study 1**

Musical notation for Chord Study 1* in F major, 4/4 time. The piece consists of two staves with six numbered measures, each containing a specific chord.

Chord Study 2 - articulations:

Musical notation for Chord Study 2 - articulations in F major, 4/4 time. The piece consists of two staves with five numbered measures, each containing a specific chord with articulation marks.

Chorales & Tuning Exercises in C (Concert Bb)

Interval Tuning

1 Intervals from tonic (major 3rd, perfect 4th, perfect 5th)

2 Intervals of a major 3rd on the I-IV-V-I chord progression

3 Intervals of a perfect 5th on the I-IV-V-I chord progression

Chord Tuning

Chorale 1 (full band)

Chorale 2 (full band)

Tpt 1/2 *mf*

1 2 3 4

5 *divisi* 6 *a2* 7 8

ritard

Chorale Melody on Chester

Subdivision

Chorale Melody *mf*

Bopped

1 2 3 4 (cadence)

5 6 7 8 (cadence)

Chester (full band)

Tpt 1/2 *mf*

1 2 3 4

5 6 7 8

9 10 11 12 *mp*

13 14 15 16 *mf* *f*

Chorales & Tuning Exercises in G (Concert F)

Interval Tuning

1 Intervals from tonic (major 3rd, perfect 4th, perfect 5th)

Musical notation for Interval Tuning 1. The exercise is written on a single staff in G major (one sharp). It consists of three measures, each containing a pair of notes. Measure 1: G (1) and B (2). Measure 2: G (1) and C (3). Measure 3: G (1) and D (4). The notes are marked with fingerings 1 through 6.

2 Intervals of a major 3rd on the I-IV-V-I chord progression

Musical notation for Interval Tuning 2. The exercise is written on a single staff in G major. It consists of four measures, each containing a pair of notes. Measure 1: G (1) and B (2), labeled 'I'. Measure 2: G (1) and C (3), labeled 'IV'. Measure 3: G (1) and D (4), labeled 'V'. Measure 4: G (1) and B (2), labeled 'I'. The notes are marked with fingerings 1 through 7.

3 Intervals of a perfect 5th on the I-IV-V-I chord progression

Musical notation for Interval Tuning 3. The exercise is written on a single staff in G major. It consists of four measures, each containing a pair of notes. Measure 1: G (1) and D (5), labeled 'I'. Measure 2: G (1) and C (3), labeled 'IV'. Measure 3: G (1) and D (4), labeled 'V'. Measure 4: G (1) and B (2), labeled 'I'. The notes are marked with fingerings 1 through 7.

Chord Tuning

Musical notation for Chord Tuning 1. It shows two staves: 'Cues' and 'Tpt 1/2'. The exercise is written in G major. Measure 1: Cues (G, B), Tpt 1/2 (G, B), labeled 'I'. Measure 2: Cues (G, C), Tpt 1/2 (G, C), labeled 'IV'. Measure 3: Cues (G, D), Tpt 1/2 (G, D), labeled 'V7'. Measure 4: Cues (G, B), Tpt 1/2 (G, B), labeled 'I'. The notes are marked with fingerings 1, 2 (3rd), 3 (root), and 4.

Musical notation for Chord Tuning 2. It shows two staves: 'Cues' and 'Tpt 1/2'. The exercise is written in G major. Measure 1: Cues (G, D), Tpt 1/2 (G, D), labeled 'V'. Measure 2: Cues (G, C), Tpt 1/2 (G, C), labeled 'V7'. Measure 3: Cues (G, B), Tpt 1/2 (G, B), labeled 'I'. The notes are marked with fingerings 3 (root), 6 (5th), 7 (5th), and 8 (3rd).

Chorale 3 (full band)

Musical notation for Chorale 3 (full band). It shows a single staff for 'Tpt 1/2'. The exercise is written in G major. It consists of 11 measures. Measure 1: G (mf), labeled '1'. Measure 2: G, B, labeled '2'. Measure 3: G, B, C, labeled '3'. Measure 4: G, B, C, D, labeled '4'. Measure 5: G, B, C, D, E, labeled '5'. Measure 6: G, B, C, D, E, F, labeled '6'. Measure 7: G, B, C, D, E, F, G, labeled '7'. Measure 8: G, B, C, D, E, F, G, A, labeled '8'. Measure 9: G, B, C, D, E, F, G, A, B, labeled '9'. Measure 10: G, B, C, D, E, F, G, A, B, C, labeled '10'. Measure 11: G, B, C, D, E, F, G, A, B, C, D, labeled '11'.

Chorale 4 (full band)

Musical score for Chorale 4 (full band) for Tpt 1/2. The score is in G major and 4/4 time. It consists of two staves. The first staff contains measures 1 through 4, and the second staff contains measures 5 through 8. The dynamic marking is *mf*. Measure 7 includes the instruction *divisi* and a second ending marked *a2*.

Chorale Melody on Bach 95

Musical score for Chorale Melody on Bach 95. The score is in G major and 4/4 time. It consists of three staves: Subdivision, Chorale Melody, and Bopped. The dynamic marking is *mf*. The Subdivision staff contains measures 1 through 4, ending with a *(cadence)*. The Chorale Melody staff contains measures 1 through 4. The Bopped staff contains measures 1 through 4. The score continues with measures 5 through 8, also ending with a *(cadence)*.

Bach 95 (full band)

Musical score for Bach 95 (full band) for Tpt 1/2. The score is in G major and 4/4 time. It consists of three staves. The first staff contains measures 1 through 4, and the second staff contains measures 5 through 8. The third staff contains measures 9 through 12. The dynamic marking is *mf*.

Chorales & Tuning Exercises in F (Concert Eb)

Interval Tuning

1 Intervals from tonic (major 3rd, perfect 4th, perfect 5th)

2 Intervals of a major 3rd on the I-IV-V-I chord progression

3 Intervals of a perfect 5th on the I-IV-V-I chord progression

Chord Tuning

Chorale 5 (full band)

Chorale 6 (full band)

Tpt 1/2 *mf*

1 *divisi* 2 3 4

5 6 7 8

Chorale Melody on America

Subdivision

Chorale Melody *mf*

Bopped

4 5 6 (cadence)

America (full band)

Tpt 1/2 *mf*

1 2 3 4 5

6 7 8 9 10

11 12 13 14

Chorale & Tuning Exercises in D (Concert C)

Interval Tuning

1 Intervals from tonic (major 3rd, perfect 4th, perfect 5th)

Chord Tuning

Air (full band)

Interval Tuning

1 Intervals from tonic (minor 3rd, perfect 4th, perfect 5th)

A single staff of music in G major, 4/4 time. It contains six measures, each with a pair of notes: 1. G4 (quarter) and Bb4 (quarter), 2. G4 (quarter) and C5 (quarter), 3. G4 (quarter) and D5 (quarter), 4. G4 (quarter) and E5 (quarter), 5. G4 (quarter) and F5 (quarter), 6. G4 (quarter) and G5 (quarter). The notes are numbered 1 through 6 above the staff.

Chord Tuning

Two staves of music. The top staff is labeled 'Cues' and the bottom staff is labeled 'Tpt 1/2'. The key signature has one flat (F major/D minor). The music is divided into three systems. The first system has measures 1-4: Cue 1 (root), Cue 2, Cue 3 (5th), Cue 4. Tpt 1/2 measure 1 (i), Tpt 1/2 measure 2 (5th), Tpt 1/2 measure 3 (3rd), Tpt 1/2 measure 4 (root). The second system has measures 5-6: Cue 5 (5th), Cue 6. Tpt 1/2 measure 5 (V), Tpt 1/2 measure 6 (3rd). The third system has measures 7-8: Cue 7 (5th), Cue 8. Tpt 1/2 measure 7 (V7), Tpt 1/2 measure 8 (i). Roman numerals i, iv, V, and V7 are written below the Tpt 1/2 staff.

Greensleeves (full band)

Four staves of music for Tpt 1/2. The key signature has one flat (F major/D minor). The music is divided into four systems. The first system has measures 1-4, starting with a *mf* dynamic. The second system has measures 5-8. The third system has measures 9-12. The fourth system has measures 13-16. The notation includes various rhythmic patterns and articulations such as *div.* (divisi) and *a2* (accents).

Chorale & Tuning Exercises in A (Concert G)

Interval Tuning

1 Intervals from tonic (major 3rd, perfect 4th, perfect 5th)

Musical notation for interval tuning exercise 1. The staff is in treble clef with a key signature of one sharp (F#) and a common time signature (C). It contains six measures, each with a number 1 through 6 above it. Measure 1: C4 (quarter), E4 (quarter). Measure 2: C4 (quarter), F#4 (quarter). Measure 3: C4 (quarter), G4 (quarter). Measure 4: C4 (quarter), A4 (quarter). Measure 5: C4 (quarter), B4 (quarter). Measure 6: C4 (quarter), C5 (quarter).

Chord Tuning

Musical notation for chord tuning exercise. It consists of two systems of staves. The top system is labeled 'Cues' and 'Tpt 1/2'. The bottom system is labeled 'V', 'V7', and 'I'. The key signature is one sharp (F#) and the time signature is common time (C).
System 1: Cues (measures 1-4), Tpt 1/2 (measures 1-4).
System 2: Cues (measures 5-7), Tpt 1/2 (measures 5-7).
Measure 1: Cues (root), Tpt 1/2 (root).
Measure 2: Cues (3rd), Tpt 1/2 (5th).
Measure 3: Cues (root), Tpt 1/2 (7th).
Measure 4: Cues (5th), Tpt 1/2 (3rd).
Measure 5: Cues (root), Tpt 1/2 (5th).
Measure 6: Cues (3rd), Tpt 1/2 (7th).
Measure 7: Cues (5th), Tpt 1/2 (3rd).

Pavane (full band)

Musical notation for Pavane (full band) for Tpt 1/2. The staff is in treble clef with a key signature of one sharp (F#) and a common time signature (C). It contains 12 measures, numbered 1 through 12. Measure 1 starts with a dynamic marking of *mf*. Measure 3 is marked 'divisi'. Measure 4 is marked 'a2'. Measure 7 is marked 'divisi'. Measure 9 is marked 'a2'. Measure 10 is marked 'divisi'. Measure 11 is marked 'a2'. Measure 12 ends with a double bar line.

Interval Tuning

1 Intervals from tonic (minor 3rd, perfect 4th, perfect 5th)

Musical notation for Interval Tuning exercise 1. It consists of a single staff in treble clef with a common time signature. The notes are: 1. C4 (quarter), 2. E4 (quarter), 3. F4 (quarter), 4. G4 (quarter), 5. A4 (quarter), 6. B4 (quarter). The notes are grouped into pairs: (1,2), (3,4), (5,6). Each pair is followed by a whole rest.

Chord Tuning

Musical notation for Chord Tuning exercise. It consists of two staves: Cues (top) and Tpt 1/2 (bottom). The exercise is divided into four measures, each with a chord symbol below the Tpt 1/2 staff: i, iv, V, and I. The notes are: 1. Cues: C4; Tpt 1/2: C4 (root), G3 (5th). 2. Cues: E4 (3rd); Tpt 1/2: E4 (3rd), B3 (5th). 3. Cues: F4 (root); Tpt 1/2: F4 (root), C4 (5th). 4. Cues: G4 (5th); Tpt 1/2: G4 (5th), D4 (3rd). The notes are grouped into pairs: (1,2), (3,4), (5,6), (7,8).

The Queene's Alman (full band)

Musical notation for The Queene's Alman (full band). It consists of a single staff in treble clef with a common time signature. The notes are: 1. C4 (quarter), 2. D4 (quarter), 3. E4 (quarter), 4. F4 (quarter), 5. G4 (quarter), 6. A4 (quarter), 7. B4 (quarter), 8. C5 (quarter), 9. B4 (quarter), 10. A4 (quarter), 11. G4 (quarter), 12. F4 (quarter), 13. E4 (quarter), 14. D4 (quarter), 15. C4 (quarter), 16. B3 (quarter). The notes are grouped into pairs: (1,2), (3,4), (5,6), (7,8), (9,10), (11,12), (13,14), (15,16). The notes are marked with *mf* at the beginning and *divisi* at measures 8, 11, and 12.

Chorale & Tuning Exercises in B \flat (Concert A \flat)

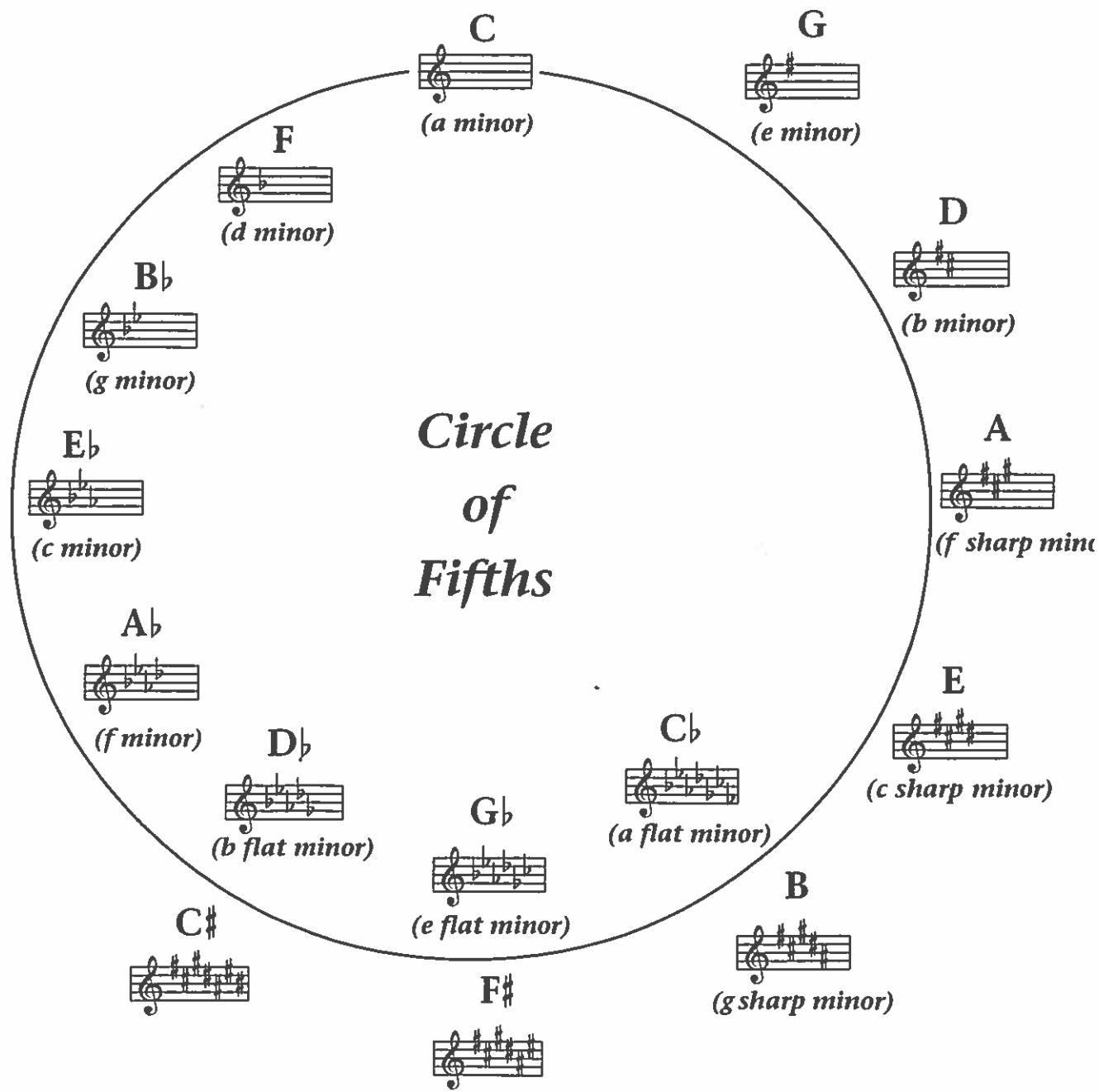
Interval Tuning

1 Intervals from tonic (major 3rd, perfect 4th, perfect 5th)

Chord Tuning

All Through the Night (full band)

Appendix



One Octave Scales & Arpeggios

In All Twelve Major Key Signatures

B \flat /C

One octave scale and arpeggio in B-flat major/C minor. The scale is written in treble clef with a common time signature. The scale consists of eight eighth notes: B-flat, C, D, E-flat, F, G, A, B-flat. The arpeggio consists of four quarter notes: B-flat, C, F, B-flat.

F/G

One octave scale and arpeggio in F major/G minor. The scale is written in treble clef with a common time signature. The scale consists of eight eighth notes: F, G, A, B-flat, C, D, E-flat, F. The arpeggio consists of four quarter notes: F, G, C, F.

C/D

One octave scale and arpeggio in C major/D minor. The scale is written in treble clef with a common time signature. The scale consists of eight eighth notes: C, D, E, F, G, A, B, C. The arpeggio consists of four quarter notes: C, D, G, C.

G/A

One octave scale and arpeggio in G major/A minor. The scale is written in treble clef with a common time signature. The scale consists of eight eighth notes: G, A, B, C, D, E, F, G. The arpeggio consists of four quarter notes: G, A, D, G.

D/E

One octave scale and arpeggio in D major/E minor. The scale is written in treble clef with a common time signature. The scale consists of eight eighth notes: D, E, F, G, A, B, C, D. The arpeggio consists of four quarter notes: D, E, A, D.

A/B

One octave scale and arpeggio in A major/B minor. The scale is written in treble clef with a common time signature. The scale consists of eight eighth notes: A, B, C, D, E, F, G, A. The arpeggio consists of four quarter notes: A, B, E, A.

E/F#

One octave scale and arpeggio in E major/F# minor. The scale is written in treble clef with a common time signature. The scale consists of eight eighth notes: E, F, G, A, B, C, D, E. The arpeggio consists of four quarter notes: E, F, B, E.

E/G

One octave scale and arpeggio in E minor/G major. The scale is written in treble clef with a common time signature. The scale consists of eight eighth notes: E, F, G, A, B, C, D, E. The arpeggio consists of four quarter notes: E, F, C, E.

B \flat /D

One octave scale and arpeggio in B-flat major/D minor. The scale is written in treble clef with a common time signature. The scale consists of eight eighth notes: B-flat, C, D, E, F, G, A, B-flat. The arpeggio consists of four quarter notes: B-flat, C, F, B-flat.

G/A♭

Musical staff in treble clef with a key signature of two flats (B♭, E♭) and a common time signature (C). The melody consists of quarter notes: G4, A♭4, B♭4, C5, D5, E5, F5, G5, A5, B5, C6, D6, E6, F6, G6, A6, B6, C7, B6, A6, G6, F6, E6, D6, C6, B5, A5, G5, F5, E5, D5, C5, B4, A4, G4.

D♭/E♭

Musical staff in treble clef with a key signature of two flats (B♭, E♭) and a common time signature (C). The melody consists of quarter notes: D♭4, E♭4, F4, G4, A4, B♭4, C5, D5, E5, F5, G5, A5, B♭5, C6, D6, E6, F6, G6, A6, B♭6, C7, B6, A6, G6, F6, E6, D6, C6, B5, A5, G5, F5, E5, D5, C5, B4, A4, G4.

A♭/B♭

Musical staff in treble clef with a key signature of two flats (B♭, E♭) and a common time signature (C). The melody consists of quarter notes: A♭4, B♭4, C5, D5, E5, F5, G5, A5, B♭5, C6, D6, E6, F6, G6, A6, B♭6, C7, B6, A6, G6, F6, E6, D6, C6, B5, A5, G5, F5, E5, D5, C5, B4, A4, G4.

E♭/F

Musical staff in treble clef with a key signature of two flats (B♭, E♭) and a common time signature (C). The melody consists of quarter notes: E♭4, F4, G4, A4, B♭4, C5, D5, E5, F5, G5, A5, B♭5, C6, D6, E6, F6, G6, A6, B♭6, C7, B6, A6, G6, F6, E6, D6, C6, B5, A5, G5, F5, E5, D5, C5, B4, A4, G4.

Chromatic Exercises

Musical staff in treble clef with a common time signature (C). The exercise consists of 8 measures of chromatic movement. Measures 1-4 ascend: C4, C♯4, D4, D♯4, E4, E♯4, F4, F♯4, G4, G♯4, A4, A♯4, B4, B♯4, C5. Measures 5-8 descend: C5, B♯4, B4, A♯4, A4, G♯4, G4, F♯4, F4, E♯4, E4, D♯4, D4, C♯4, C4.

Musical staff in treble clef with a common time signature (C). The exercise continues with 9 measures. Measures 9-12 ascend: C4, C♯4, D4, D♯4, E4, E♯4, F4, F♯4, G4, G♯4, A4, A♯4, B4, B♯4, C5. Measures 13-17 descend: C5, B♯4, B4, A♯4, A4, G♯4, G4, F♯4, F4, E♯4, E4, D♯4, D4, C♯4, C4.

C Chromatic Scale (Concert B♭)

Musical staff in treble clef with a common time signature (C). The exercise consists of 4 measures of chromatic movement. Measures 1-2 ascend: C4, C♯4, D4, D♯4, E4, E♯4, F4, F♯4, G4, G♯4, A4, A♯4, B4, B♯4, C5. Measures 3-4 descend: C5, B♯4, B4, A♯4, A4, G♯4, G4, F♯4, F4, E♯4, E4, D♯4, D4, C♯4, C4.

G Chromatic Scale (Concert F)

Musical staff in treble clef with a common time signature (C). The exercise consists of 4 measures of chromatic movement. Measures 1-2 ascend: G4, G♯4, A4, A♯4, B4, B♯4, C5, C♯5, D5, D♯5, E5, E♯5, F5, F♯5, G6. Measures 3-4 descend: G6, F♯5, F5, E♯5, E5, D♯5, D5, C♯5, C5, B♯4, B4, A♯4, A4, G♯4, G4.

Musical staff in treble clef with a common time signature (C). The exercise continues with 3 measures. Measures 5-7 descend: G4, F♯4, F4, E♯4, E4, D♯4, D4, C♯4, C4.

Full Range Scales

In All Twelve Major Key Signatures

B/C



Musical notation for the B/C scale in C major, starting on B4 and ending on C5. The scale is written in treble clef with a common time signature (C). The notes are B4, C5, D5, E5, F5, G5, A5, B5, A5, G5, F5, E5, D5, C5.

F/G



Musical notation for the F/G scale in G major, starting on F4 and ending on G5. The scale is written in treble clef with a common time signature (C). The notes are F4, G4, A4, B4, C5, D5, E5, F5, E5, D5, C5, B4, A4, G4.

C/D



Musical notation for the C/D scale in D major, starting on C4 and ending on D5. The scale is written in treble clef with a common time signature (C). The notes are C4, D4, E4, F4, G4, A4, B4, C5, B4, A4, G4, F4, E4, D4.

G/A



Musical notation for the G/A scale in A major, starting on G4 and ending on A5. The scale is written in treble clef with a common time signature (C). The notes are G4, A4, B4, C5, D5, E5, F5, G5, F5, E5, D5, C5, B4, A4.

D/E



Musical notation for the D/E scale in E major, starting on D4 and ending on E5. The scale is written in treble clef with a common time signature (C). The notes are D4, E4, F4, G4, A4, B4, C5, D5, C5, B4, A4, G4, F4, E4.

A/B



Musical notation for the A/B scale in B major, starting on A4 and ending on B5. The scale is written in treble clef with a common time signature (C). The notes are A4, B4, C5, D5, E5, F5, G5, A5, G5, F5, E5, D5, C5, B4, A4.

E/F#



Musical notation for the E/F# scale in F# major, starting on E4 and ending on F#5. The scale is written in treble clef with a common time signature (C). The notes are E4, F#4, G4, A4, B4, C5, D5, E5, D5, C5, B4, A4, G4, F#4, E4.

E/Gb



Musical notation for the E/Gb scale in Gb major, starting on E4 and ending on Gb5. The scale is written in treble clef with a common time signature (C). The notes are E4, F4, Gb4, Ab4, Bb4, C5, D5, E5, D5, C5, Bb4, Ab4, Gb4, F4, E4.

B/D \flat  Musical staff in treble clef with a key signature of three flats (B-flat, E-flat, A-flat) and a common time signature. The melody consists of eighth notes and quarter notes, starting on a middle C and moving up and down across the staff.

G \flat /A \flat  Musical staff in treble clef with a key signature of three flats (B-flat, E-flat, A-flat) and a common time signature. The melody consists of eighth notes and quarter notes, starting on a G-flat and moving up and down across the staff.

D \flat /E \flat  Musical staff in treble clef with a key signature of three flats (B-flat, E-flat, A-flat) and a common time signature. The melody consists of eighth notes and quarter notes, starting on a D-flat and moving up and down across the staff.

A \flat /B \flat  Musical staff in treble clef with a key signature of three flats (B-flat, E-flat, A-flat) and a common time signature. The melody consists of eighth notes and quarter notes, starting on an A-flat and moving up and down across the staff.

E \flat /F  Musical staff in treble clef with a key signature of three flats (B-flat, E-flat, A-flat) and a common time signature. The melody consists of eighth notes and quarter notes, starting on an E-flat and moving up and down across the staff.

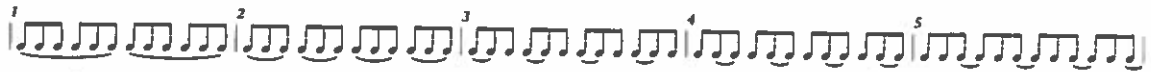
Full Range Chromatic - For Trumpets Only

 Musical staff in treble clef with a common time signature. The melody consists of eighth notes, starting on a middle C and moving up chromatically. Measure numbers 1, 2, and 3 are indicated below the staff.

 Musical staff in treble clef with a common time signature. The melody continues from the previous staff, moving up chromatically. Measure numbers 4, 5, and 6 are indicated below the staff.

 Musical staff in treble clef with a common time signature. The melody continues from the previous staff, moving up chromatically. Measure numbers 7 and 8 are indicated below the staff.

Chromatic Scales



E/F#

F/G

G/A

G/A

A/Bb

A/B

Major Arpeggios & Inversions

This musical score displays twelve major arpeggios and their inversions, each on a separate staff. The arpeggios are: Bb/C, F/G, C/D, G/A, D/E, A/B, E/F#, E/Gb, B/Db, Gw/Ab, Db/Eb, and Ab/Bb. Each staff begins with a treble clef and a common time signature (C). The notes are written in a sequence that starts with the root of the chord and moves through the other notes in a specific order, typically ascending and then descending. The key signatures vary for each arpeggio, reflecting the specific chord being played.

Scale and Chord Related Theory

A scale is a series of single notes which ascend or descend in a stepwise manner within the range of an octave. Because scales are arranged in a stepwise manner, the note names will always be in alphabetical order.

The notes within scales have a specific whole step/half step intervallic relationship with each other.

C major scale (half steps are between scale degrees 3 - 4 and 7 - 8).

Intervals: W W H W W W H

Scale Degrees: 1 2 3 4 5 6 7 8

Tonic Dominant Leading Tone

C natural minor scale (lower the 3rd, 6th, and 7th scale degrees a half step).

Intervals: W H W W H W W

Scale Degrees: 1 2 3 4 5 6 7 8

C harmonic minor scale (lower the 3rd and 6th scale degrees a half step).

Intervals: W H W W H W+H H

Scale Degrees: 1 2 3 4 5 6 7 8

C melodic minor scale (ascending lower the 3rd and descending lower the 7th, 6th, and 3rd scale degrees a half step).

Intervals: W H W W W W H W W H W W H W

Scale Degrees: 1 2 3 4 5 6 7 8 7 6 5 4 3 2 1

Augmented & Diminished Intervals from C

Augmented 4th (tritone)

Diminished 5th (tritone)

Augmented 5th

Intervals of the C major scale:

Major 2nd Major 3rd Perfect 4th Perfect 5th Major 6th Major 7th Perfect Octave

Minor Intervals from C

minor 2nd
minor 3rd
minor 6th
minor 7th

C major triad (three note chord) in root position and inversions.

Root Position First Inversion Second Inversion

From Bottom: root-third-fifth From Bottom: third-fifth-root From Bottom: fifth-root-third

Basic chord types constructed from C:

Major Minor lower third Diminished lower third & fifth

Augmented raise fifth Sus 4 fourth replaces third

Essential Vocabulary:

Interval - the distance between two notes

Half Step - the closest interval between two notes

Whole Step - an interval of two half steps

Third - the distance of two adjacent lines or two adjacent spaces

Scale Degree - a note's classification according to its position in the scale

Tonic - the first note of a scale, the "key-note" from which the scale takes its name

Dominant - the fifth scale degree, chords built on this note are "dominant" and normally resolve to the tonic

Leading Tone - the seventh scale degree, it is one half step below tonic and its tendency is to "lead" or rise to the tonic