

Foundations for Superior Performance Warm-Ups and Technique for Band

by Richard Williams and Jeff King

A comprehensive and sequential book of warm-ups, scales, technical patterns, chord studies, tuning exercises, and chorales for concert band.

Designed to organize the daily rehearsal and advance the performance level of the ensemble.

Practical and efficient exercises in all twelve major keys developed in the classroom.

Table of Contents

Section 1: Warm-Ups

- Concert F Around the Band 2
- Articulation Exercises 3
- Long Tones 4-5
- Warm-Up Sets 1 through 4 6-9

Section 2: Technique

Major and minor scales, mini-scales, scale patterns, scales in thirds, intervals, triads, and chord studies.

- Concert B \flat 10-11
- Concert F 12-13
- Concert C 14-15
- Concert G 16-17
- Concert D 18
- Concert A 19
- Concert E 20
- Concert B 21
- Concert G \flat 22-23
- Concert D \flat 24-25
- Concert A \flat 26-27
- Concert E \flat 28-29

Section 3: Chorales and Tuning Exercises

Interval tuning, chord tuning, and chorales

- Concert B \flat 30-31
- Concert F 32-33
- Concert E \flat 34-35
- Concert C 36
- Concert c minor 37
- Concert G 38
- Concert g minor 39
- Concert A \flat 40

Appendix:

- Circle of Fifths 41
- One Octave Scales and Arpeggios 42
- Full Range Scales 44
- Chromatic Scales 46
- Major Arpeggios and Inversions 48

ISBN 0-8497-7013-0

©1998 Neil A. Kjos Music Company, 4380 Jutland Drive, San Diego, California 92117
International copyright secured. All rights reserved. Printed in U.S.A.

Warning! These arrangements are protected by copyright law. To copy or reproduce them by any method is an infringement of the copyright law. Anyone who reproduces copyrighted matter is subject to substantial penalties and assessments for each infringement.

THE Saxophone Fingering Chart

A# Bb	B	C	C# Db	D	D# Eb	E
-------	---	---	-------	---	-------	---

F	F# Gb	G	G# Ab	A	A# Bb
---	-------	---	-------	---	-------

B	C	C# Db	D	D# Eb	E	F
---	---	-------	---	-------	---	---

F# Gb	G	G# Ab	A	A# Bb	B
-------	---	-------	---	-------	---

C	C# Db	D	D# Eb	E	F
---	-------	---	-------	---	---

(Notes on gray background are suggested altissimo fingerings.)

F# Gb	G	G# Ab	A	A# Bb	B	C
-------	---	-------	---	-------	---	---

(When more than one fingering is shown, the first is the most common.)

Concert F Around The Band

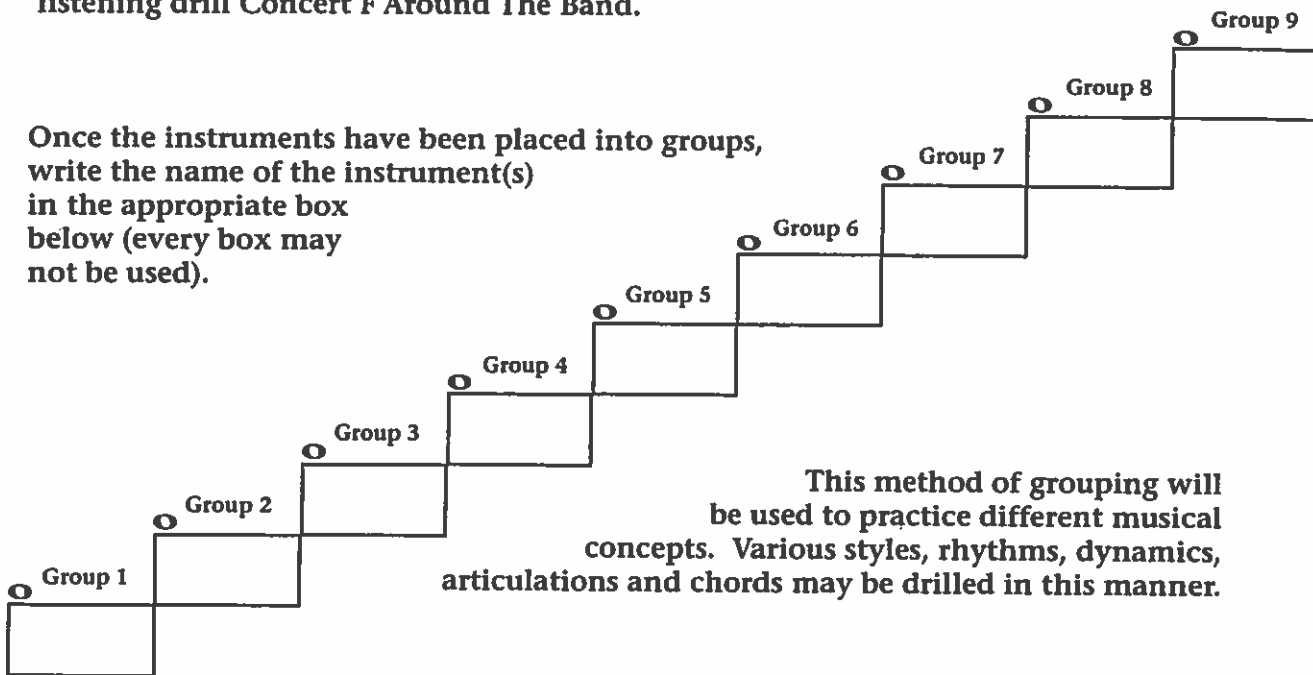
Each instrument will play concert F in their middle register. As an alto saxophonist, you will need to transpose the concert F in measure one to your instrument's pitch in measure two.

The transposition for alto saxophone is up a major sixth.



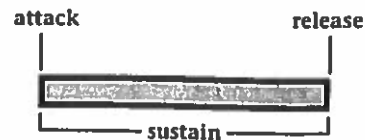
Your director will divide the band into various sections or groups for the listening drill Concert F Around The Band.

Once the instruments have been placed into groups, write the name of the instrument(s) in the appropriate box below (every box may not be used).



As you play the exercise, keep the following concepts in mind:

- match the primary parts of each note (attack-sustain-release)
- work for a smooth shape to each note (no bumps in the sound)
- hand off tenuto notes (full value) without creating "holes" between the attacks
- match intonation, intensity, volume, tone quality, and the "body of sound"
- be aware of the different colors (timbres) of the instrument groups and their location in the room
- listen from the bottom groups and balance low-middle-high



Articulation Exercises

Articulations: A Study in Styles

Four connected quarter-notes (tenuto). The sound of one note "touches" the next note.

Four quarter-notes in "lifted" style. The attack is the same as tenuto, but the end of the note is tapered.

Four quarter-notes "lifted and short" (staccato). Separated and detached (half full value).

Eighth-notes in connected style.

Eighth-notes in lifted and short style.

Eighth-note triplets in connected style.

Eighth-note triplets in a detached style (bounced).

Sixteenth-notes in a connected style.

Articulation Exercise on Concert F

Long Tones

Concert F Descending

1

Musical notation for exercise 1, measures 1-14. The first staff contains measures 1-7, and the second staff contains measures 8-14. The notes are: 1 (F), 2 (E), 3 (D), 4 (C), 5 (B), 6 (A), 7 (G), 8 (F), 9 (E), 10 (D), 11 (C), 12 (B), 13 (A), 14 (G).

2

Musical notation for exercise 2, measures 1-4. The notes are: 1 (F), 2 (E), 3 (D), 4 (C).

Long Tone 1

1a

Musical notation for exercise 1a, measures 1-14. The first staff contains measures 1-7, and the second staff contains measures 8-14. The notes are: 1 (F), 2 (E), 3 (D), 4 (C), 5 (B), 6 (A), 7 (G), 8 (F), 9 (E), 10 (D), 11 (C), 12 (B), 13 (A), 14 (G).

1b

Musical notation for exercise 1b, measures 1-14. The first staff contains measures 1-7, and the second staff contains measures 8-14. The notes are: 1 (F), 2 (E), 3 (D), 4 (C), 5 (B), 6 (A), 7 (G), 8 (F), 9 (E), 10 (D), 11 (C), 12 (B), 13 (A), 14 (G).

1c

Musical notation for exercise 1c, measures 1-10. The first staff contains measures 1-5, and the second staff contains measures 6-10. The notes are: 1 (F), 2 (E), 3 (D), 4 (C), 5 (B), 6 (A), 7 (G), 8 (F), 9 (E), 10 (D).

1d

Musical notation for exercise 1d, measures 1-12. The first staff contains measures 1-6, and the second staff contains measures 7-12. The notes are: 1 (F), 2 (E), 3 (D), 4 (C), 5 (B), 6 (A), 7 (G), 8 (F), 9 (E), 10 (D), 11 (C), 12 (B).

Long Tone 2

Musical notation for Long Tone 2, consisting of four staves of music. The notes are numbered 1 through 26. The first staff contains notes 1-7, the second 8-14, the third 15-21, and the fourth 22-26. The notes are primarily half notes and quarter notes, with some beamed eighth notes.

Long Tone 3

3a Intervals of a minor 2nd Intervals of a major 2nd

Intervals of a minor 3rd Intervals of a major 3rd

Intervals of a perfect 4th Intervals of an augmented 4th

Intervals of a perfect 5th

Musical notation for Long Tone 3a, showing intervals of a minor 2nd, major 2nd, minor 3rd, major 3rd, perfect 4th, augmented 4th, and perfect 5th. The notes are numbered 1 through 28.

3b Intervals of a minor 2nd Intervals of a major 2nd Intervals of a minor 3rd

Intervals of a major 3rd Intervals of a perfect 4th Intervals of an augmented 4th

Musical notation for Long Tone 3b, showing intervals of a minor 2nd, major 2nd, minor 3rd, major 3rd, perfect 4th, and augmented 4th. The notes are numbered 1 through 12.

Warm-Up Set 1

Option 1 (unison "lip slur" with brass)

Option 2 (octave slur study with brass lip slur)

Options 3, 4, & 5 (technical patterns with brass lip slurs)

Articulation Patterns:

Warm-Up Set 2

Option 1 (unison "lip slur" with brass)

Option 2 (octave slur study with brass lip slur)

Options 3, 4, & 5 (technical patterns with brass lip slurs)

Articulation Patterns:

Warm-Up Set 3

Option 1 (unison "lip slur" with brass)

Musical notation for Option 1, consisting of three staves of music. The first staff contains measures 1-5, the second staff contains measures 6-10, and the third staff contains measures 11-14. Each measure is marked with a number (1-14) and includes slurs and fingerings.

Option 2 (octave slur study with brass lip slur)

Musical notation for Option 2, consisting of three staves of music. The first staff contains measures 1-5, the second staff contains measures 6-10, and the third staff contains measures 11-14. Each measure is marked with a number (1-14) and includes slurs and fingerings.

Options 3, 4, & 5 (technical patterns with brass lip slurs)

Articulation Patterns:

Musical notation for Options 3, 4, and 5, consisting of four staves of music. The first staff contains measures 1-4, the second staff contains measures 5-8, the third staff contains measures 9-12, and the fourth staff contains measures 13-14. Each measure is marked with a number (1-14) and includes slurs and fingerings.

Warm-Up Set 4

Option 1 (unison "lip slur" with brass)

Option 2 (octave slur study with brass lip slur)

Options 3, 4, & 5 (technical patterns with brass lip slurs)

Articulation Patterns:

Technical Exercises in the Key of G (Concert B \flat)

Major Scale

Four staves of musical notation showing scales in the key of G (Concert B \flat):

- Major Scale:** G4, A4, B4, C5, B4, A4, G4.
- Natural Minor:** G4, A4, B4, C5, B4, A4, G4.
- Harmonic Minor:** G4, A4, B4, C5, B4, A4, G4 (with a sharp on the 7th degree, F#4).
- Melodic Minor:** G4, A4, B4, C5, B4, A4, G4 (with a sharp on the 7th degree, F#4).

Mini-Scale & Tonic Arpeggio

Two staves of musical notation showing a mini-scale and tonic arpeggio in the key of G (Concert B \flat):

- Mini-Scale:** G4, A4, B4, C5, B4, A4, G4.
- Tonic Arpeggio:** G4, B4, D5, G5, F5, E5, D5, C5, B4, A4, G4.

Scale Pattern 1 *articulations:

Two staves of musical notation showing Scale Pattern 1 with articulations in the key of G (Concert B \flat):

- Scale Pattern 1:** G4, A4, B4, C5, B4, A4, G4.
- Articulations:** A series of eighth notes with accents (1, 2, 3, 4, 5, 6, 7, 8) and slurs.

Saxophones only-extended scale

One staff of musical notation showing the extended scale for saxophones in the key of G (Concert B \flat):

- Extended Scale:** G4, A4, B4, C5, B4, A4, G4, F#4, E4, D4, C4, B3, A3, G3.

Scale Pattern 2*

Musical notation for Scale Pattern 2* in G major, 4/4 time. The piece consists of two staves. The upper staff features a melodic line with eighth-note patterns, and the lower staff provides a bass line with eighth-note accompaniment.

Scale in Thirds*

Musical notation for Scale in Thirds* in G major, 4/4 time. The piece consists of two staves. The upper staff plays a scale in thirds, and the lower staff provides a bass line with eighth-note accompaniment.

Interval Study

Musical notation for Interval Study in G major, 4/4 time. The piece consists of a single staff with a melodic line of eighth notes.

Triads of the G Scale

Musical notation for Triads of the G Scale in G major, 4/4 time. The piece consists of a single staff showing seven triads labeled I through vii^o. Each triad is followed by a short eighth-note scale.

Chord Study 1*

Musical notation for Chord Study 1* in G major, 4/4 time. The piece consists of two staves. The upper staff has six measures of eighth-note patterns, each starting with a chord. The lower staff provides a bass line with eighth-note accompaniment.

Chord Study 2 - articulations:

Musical notation for Chord Study 2 - articulations in G major, 4/4 time. The piece consists of two staves. The upper staff features eighth-note patterns with triplets and accents. The lower staff provides a bass line with eighth-note accompaniment.

Technical Exercises in the Key of D (Concert F)

Major Scale

Natural Minor

Harmonic Minor

Melodic Minor

Mini-Scale & Tonic Arpeggio

Scale Pattern 1 *articulations: $\overset{1}{\cdot}$ $\overset{2}{\cdot}$ $\overset{3}{\cdot}$ $\overset{4}{\cdot}$ $\overset{5}{\cdot}$ $\overset{6}{\cdot}$ $\overset{7}{\cdot}$ $\overset{8}{\cdot}$

*Scale Pattern 2**

Musical notation for Scale Pattern 2* in D major, 4/4 time. The piece consists of two staves. The upper staff features a melodic line with eighth-note patterns, and the lower staff provides a rhythmic accompaniment of eighth notes.

*Scale in Thirds**

Musical notation for Scale in Thirds* in D major, 4/4 time. The upper staff plays a scale in thirds, while the lower staff plays a steady eighth-note accompaniment.

Interval Study

Musical notation for Interval Study in D major, 4/4 time. The upper staff contains a sequence of intervals, and the lower staff provides a rhythmic accompaniment.

Triads of the D Scale

Musical notation for Triads of the D Scale in D major, 4/4 time. The upper staff shows seven triads labeled I through vii^o, each with a specific fingering indicated below it.

*Chord Study 1**

Musical notation for Chord Study 1* in D major, 4/4 time. The upper staff features six chords with numbered fingerings (1-6) above them, and the lower staff provides a rhythmic accompaniment.

Chord Study 2 - articulations:

Musical notation for Chord Study 2 - articulations in D major, 4/4 time. The upper staff shows six chords with triplets and other articulations indicated above them, and the lower staff provides a rhythmic accompaniment.

Technical Exercises in the Key of A (Concert C)

Major Scale

Musical notation for the Major Scale, Natural Minor, Harmonic Minor, and Melodic Minor in the key of A. The notation is presented in four staves, each with a treble clef and a common time signature (C). The Major Scale is shown in the first staff, the Natural Minor in the second, the Harmonic Minor in the third, and the Melodic Minor in the fourth. Each scale is written in a single line of music, with the notes of the scale indicated by stems and flags.

Mini-Scale & Tonic Arpeggio

Musical notation for the Mini-Scale & Tonic Arpeggio in the key of A. The notation is presented in two staves, each with a treble clef and a common time signature (C). The Mini-Scale is shown in the first staff, and the Tonic Arpeggio is shown in the second staff. The Mini-Scale is written in a single line of music, with the notes of the scale indicated by stems and flags. The Tonic Arpeggio is written in a single line of music, with the notes of the arpeggio indicated by stems and flags.

Scale Pattern 1 *articulations: *(Musical notation showing articulations for Scale Pattern 1)*

Musical notation for Scale Pattern 1 with articulations, including a high F# note. The notation is presented in two staves, each with a treble clef and a common time signature (C). The Scale Pattern 1 is shown in the first staff, and the high F# note is shown in the second staff. The Scale Pattern 1 is written in a single line of music, with the notes of the scale indicated by stems and flags. The high F# note is written in a single line of music, with the note indicated by a stem and a flag.

Saxophones only-extended scale

Musical notation for the Saxophones only-extended scale in the key of A. The notation is presented in a single staff with a treble clef and a common time signature (C). The extended scale is written in a single line of music, with the notes of the scale indicated by stems and flags.

Scale Pattern 2*

Musical notation for Scale Pattern 2* in A major. The piece is in 2/4 time. The right hand features a melodic line with a trill on the high F# (labeled "(high F# only)"), while the left hand provides a steady bass accompaniment.

Scale in Thirds*

Musical notation for Scale in Thirds* in A major. The right hand plays a scale of thirds, with a trill on the high F# (labeled "(high F# only)"). The left hand plays a scale of single notes.

Interval Study

Musical notation for Interval Study in A major, consisting of a single melodic line in the right hand.

Triads of the A Scale

Musical notation for Triads of the A Scale, showing seven triads labeled I through vii^o in A major.

Chord Study 1*

Musical notation for Chord Study 1* in A major. The right hand features a melodic line with a trill on the high F# (labeled "(high F# only)"), and the left hand provides a bass accompaniment.

Chord Study 2 - articulations:

Musical notation for Chord Study 2 - articulations in A major. The right hand features a melodic line with triplets and slurs, and the left hand provides a bass accompaniment.

Technical Exercises in the Key of E (Concert G)

Major Scale

Natural Minor

Harmonic Minor

Melodic Minor

Mini-Scale & Tonic Arpeggio

Scale Pattern 1 *articulations: 

Scale Pattern 2*

Scale in Thirds*

Interval Study

Triads of the E Scale

Chord Study 1*

Chord Study 2 - articulations:

Technical Exercises in the Key of B (Concert D)

Major Scale

Musical notation for the Major Scale exercise in the key of B. It consists of two staves. The top staff shows the ascending scale, and the bottom staff shows the descending scale. The key signature has two sharps (F# and C#), and the time signature is common time (C).

Natural Minor

Musical notation for the Natural Minor scale exercise in the key of B. It consists of two staves. The top staff shows the ascending scale, and the bottom staff shows the descending scale. The key signature has two sharps (F# and C#), and the time signature is common time (C).

Harmonic Minor

Musical notation for the Harmonic Minor scale exercise in the key of B. It consists of two staves. The top staff shows the ascending scale, and the bottom staff shows the descending scale. The key signature has two sharps (F# and C#), and the time signature is common time (C).

Melodic Minor

Musical notation for the Melodic Minor scale exercise in the key of B. It consists of two staves. The top staff shows the ascending scale, and the bottom staff shows the descending scale. The key signature has two sharps (F# and C#), and the time signature is common time (C).

Mini-Scale & Tonic Arpeggio

Musical notation for the Mini-Scale & Tonic Arpeggio exercise in the key of B. It consists of two staves. The top staff shows a mini-scale, and the bottom staff shows a tonic arpeggio. The key signature has two sharps (F# and C#), and the time signature is common time (C).

Scale in Thirds - articulations:

Musical notation for the Scale in Thirds exercise in the key of B. It consists of two staves. The top staff shows the ascending scale, and the bottom staff shows the descending scale. The key signature has two sharps (F# and C#), and the time signature is common time (C).

Technical Exercises in the Key of F# (Concert A)

Major Scale

Natural Minor

Harmonic Minor

Melodic Minor

Mini-Scale & Tonic Arpeggio

Scale in Thirds - articulations:

Technical Exercises in the Key of D \flat (Concert E)

Major Scale

Natural Minor

Harmonic Minor

Melodic Minor

Mini-Scale & Tonic Arpeggio

Scale in Thirds - articulations:

Technical Exercises in the Key of Ab (Concert B)

Major Scale

This section contains four staves of musical notation, each representing a different scale in the key of Ab major. The first staff is the Major Scale, the second is the Natural Minor, the third is the Harmonic Minor, and the fourth is the Melodic Minor. Each staff begins with a treble clef and a key signature of three flats (Ab major). The scales are written in a single line of music, starting on the tonic (Ab) and ascending and then descending.

Mini-Scale & Tonic Arpeggio

This section contains two staves of musical notation. The top staff features a melodic line with eighth-note patterns and slurs, representing a mini-scale exercise. The bottom staff features a bass line with eighth-note patterns, representing a tonic arpeggio exercise. Both staves are in the key of Ab major.

Scale in Thirds - articulations:

This section contains two staves of musical notation. The top staff shows a melodic line with eighth-note patterns and slurs, representing a scale in thirds exercise. The bottom staff shows a bass line with eighth-note patterns, representing a scale in thirds exercise. Both staves are in the key of Ab major.

Saxophones only-extended scale

This section contains a single staff of musical notation for saxophones only. It features an extended scale exercise in the key of Ab major, starting on the tonic (Ab) and ascending and then descending.

Technical Exercises in the Key of E \flat (Concert G \flat)

Major Scale

Natural Minor

Harmonic Minor

Melodic Minor

Mini-Scale & Tonic Arpeggio

Scale Pattern 1 *articulations:

Scale Pattern 2*

Musical notation for Scale Pattern 2* in E-flat major, 4/4 time. The piece consists of two staves. The upper staff features a melodic line with eighth-note patterns, and the lower staff provides a bass line with eighth-note accompaniment.

Scale in Thirds*

Musical notation for Scale in Thirds* in E-flat major, 4/4 time. The upper staff plays a scale in thirds, while the lower staff plays a scale in eighth notes.

Interval Study

Musical notation for Interval Study in E-flat major, 4/4 time. The piece consists of a single staff with eighth-note patterns.

Triads of the E \flat Scale

Musical notation for Triads of the E \flat Scale in E-flat major, 4/4 time. The piece consists of a single staff showing seven triads labeled I through vii^o.

Chord Study 1*

Musical notation for Chord Study 1* in E-flat major, 4/4 time. The piece consists of two staves. The upper staff features a melodic line with eighth-note patterns, and the lower staff provides a bass line with eighth-note accompaniment. The study is divided into six measures, numbered 1 through 6.

Chord Study 2 - articulations:

Musical notation for Chord Study 2 - articulations in E-flat major, 4/4 time. The piece consists of two staves. The upper staff features a melodic line with eighth-note patterns and articulation marks (accents), and the lower staff provides a bass line with eighth-note accompaniment. The study is divided into five measures, numbered 1 through 5.

Technical Exercises in the Key of B \flat (Concert D \flat)

Major Scale

Natural Minor

Harmonic Minor

Melodic Minor

Mini-Scale & Tonic Arpeggio

Scale Pattern 1 *articulations:

Scale Pattern 2*

Musical notation for Scale Pattern 2* in B-flat major, 4/4 time. The piece consists of two staves. The upper staff features a melodic line with eighth-note patterns, and the lower staff provides a bass line with eighth-note accompaniment.

Scale in Thirds*

Musical notation for Scale in Thirds* in B-flat major, 4/4 time. The piece consists of two staves. The upper staff plays a scale in thirds, and the lower staff provides a bass line with eighth-note accompaniment.

Interval Study

Musical notation for Interval Study in B-flat major, 4/4 time. The piece consists of a single staff with a melodic line featuring eighth-note intervals.

Triads of the B \flat Scale

Musical notation for Triads of the B \flat Scale in B-flat major, 4/4 time. The piece consists of a single staff showing seven triads labeled I through vii^o.

Chord Study 1*

Musical notation for Chord Study 1* in B-flat major, 4/4 time. The piece consists of two staves. The upper staff features sixteenth-note arpeggiated chords, and the lower staff provides a bass line with eighth-note accompaniment.

Chord Study 2 - articulations:

Musical notation for Chord Study 2 - articulations in B-flat major, 4/4 time. The piece consists of two staves. The upper staff features eighth-note arpeggiated chords with articulation marks, and the lower staff provides a bass line with eighth-note accompaniment.

Technical Exercises in the Key of F (Concert A \flat)

Major Scale

Natural Minor

Harmonic Minor

Melodic Minor

Mini-Scale & Tonic Arpeggio

Scale Pattern 1 *articulations:

Scale Pattern 2*

Musical notation for Scale Pattern 2* in G major, 4/4 time. The piece consists of two staves. The upper staff features a melodic line with eighth-note patterns, and the lower staff provides a harmonic accompaniment with eighth-note chords.

Scale in Thirds*

Musical notation for Scale in Thirds* in G major, 4/4 time. The upper staff plays a scale in thirds, while the lower staff provides a steady accompaniment of eighth-note chords.

Interval Study

Musical notation for Interval Study in G major, 4/4 time. The single staff contains a sequence of eighth-note intervals, likely focusing on the intervals between adjacent notes of the scale.

Triads of the F Scale

Musical notation for Triads of the F Scale in G major, 4/4 time. The single staff shows seven triads labeled I through vii^o, each with a chord symbol above it.

Chord Study 1*

Musical notation for Chord Study 1* in G major, 4/4 time. The piece consists of two staves. The upper staff features a melodic line with eighth-note patterns, and the lower staff provides a harmonic accompaniment with eighth-note chords. The notes in the upper staff are numbered 1 through 6.

Chord Study 2 - articulations:

Musical notation for Chord Study 2 - articulations in G major, 4/4 time. The piece consists of two staves. The upper staff features a melodic line with eighth-note patterns, and the lower staff provides a harmonic accompaniment with eighth-note chords. The notes in the upper staff are numbered 1 through 5.

Technical Exercises in the Key of C (Concert Eb)

Major Scale

Musical notation for the Major Scale exercise in C major, showing two staves with ascending and descending lines.

Natural Minor

Musical notation for the Natural Minor scale exercise in C minor, showing two staves with ascending and descending lines.

Harmonic Minor

Musical notation for the Harmonic Minor scale exercise in C minor, showing two staves with ascending and descending lines.

Melodic Minor

Musical notation for the Melodic Minor scale exercise in C minor, showing two staves with ascending and descending lines.

Mini-Scale & Tonic Arpeggio

Musical notation for the Mini-Scale & Tonic Arpeggio exercise, showing two staves with a mini-scale and a tonic arpeggio.

Scale Pattern 1 *articulations:

Musical notation for Scale Pattern 1, showing two staves with a scale pattern and articulations.

*Scale Pattern 2**

Musical notation for Scale Pattern 2* in C major, 4/4 time. The piece consists of two staves. The upper staff features a melodic line with eighth-note patterns, and the lower staff provides a rhythmic accompaniment of eighth notes.

*Scale in Thirds**

Musical notation for Scale in Thirds* in C major, 4/4 time. The upper staff plays a scale in thirds, while the lower staff plays a scale in eighth notes.

Interval Study

Musical notation for Interval Study in C major, 4/4 time. The piece consists of a single staff with a sequence of intervals: eighth notes, quarter notes, and eighth notes.

Triads of the C Scale

Musical notation for Triads of the C Scale in C major, 4/4 time. The piece consists of a single staff showing seven triads labeled I through VII^o.

*Chord Study 1**

Musical notation for Chord Study 1* in C major, 4/4 time. The piece consists of two staves. The upper staff features six measures of chords with eighth-note patterns, numbered 1 through 6. The lower staff provides a rhythmic accompaniment of eighth notes.

Chord Study 2 - articulations:

Musical notation for Chord Study 2 - articulations in C major, 4/4 time. The piece consists of two staves. The upper staff features six measures of chords with eighth-note patterns, numbered 1 through 6, with articulation marks above the notes. The lower staff provides a rhythmic accompaniment of eighth notes.

Chorales & Tuning Exercises in G (Concert Bb)

Interval Tuning

1 Intervals from tonic (major 3rd, perfect 4th, perfect 5th)

2 Intervals of a major 3rd on the I-IV-V-I chord progression

3 Intervals of a perfect 5th on the I-IV-V-I chord progression

Chord Tuning

Chorale 1 (full band)

Chorale 2 (full band)

Al Sx 1/2

mf

ritard

Chorale Melody on Chester

Subdivision

Chorale Melody

Bopped

mf

(cadence)

(cadence)

Chester Chorale (full band)

Al Sx 1/2

mf

mp

mf

f

Chorales & Tuning Exercises in D (Concert F)

Interval Tuning

1 Intervals from tonic (major 3rd, perfect 4th, perfect 5th)

2 Intervals of a major 3rd on the I-IV-V-I chord progression

3 Intervals of a perfect 5th on the I-IV-V-I chord progression

Chord Tuning

Chorale 3 (full band)

Chorale 4 (full band)

Al Sx 1/2 *mf*

Chorale Melody on Bach 95

Subdivision
Chorale Melody *mf*
Bopped

(cadence)

Bach 95 (full band)

Al Sx 1/2 *mf*

Chorales & Tuning Exercises in C (Concert Eb)

Interval Tuning

1 Intervals from tonic (major 3rd, perfect 4th, perfect 5th)

2 Intervals of a major 3rd on the I-IV-V-I chord progression

3 Intervals of a perfect 5th on the I-IV-V-I chord progression

Chord Tuning

Chorale 5 (full band)

Chorale 6 (full band)

Al Sx 1/2

mf

Chorale Melody on America

Subdivision

Chorale Melody

Bopped

mf

(cadence)

America (full band)

Al Sx 1/2

mf

Chorale & Tuning Exercises in A (Concert C)

Interval Tuning

1 Intervals from tonic (major 3rd, perfect 4th, perfect 5th)

Musical notation for interval tuning exercise 1. The staff shows a sequence of notes in A major: A (1), C# (2), F# (3), A (4), C# (5), E (6). The notes are grouped into pairs: (A, C#), (C#, F#), (F#, A), (A, C#), (C#, E), (E, A).

Chord Tuning

Musical notation for chord tuning exercise. It consists of two systems. The first system has two staves: 'Cues' and 'AI Sx 1/2'. The 'Cues' staff has notes for chords I, IV, and I. The 'AI Sx 1/2' staff has notes for chords I, IV, and I, with labels like '(root)', '(5th)', and '(3rd)'. The second system has two staves with notes for chords V, V7, and I, with labels like '(root)', '(5th)', '(3rd)', and '(7th)'. Chord symbols I, IV, V, V7, and I are written below the staves.

Air (full band)

Musical notation for the 'Air (full band)' section. It consists of three staves. The first staff is labeled 'AI Sx 1/2' and starts with a dynamic marking 'mf'. It contains notes for measures 1 through 12, with markings 'divisi' above measures 2 and 12, and 'a2' above measure 3. The second and third staves continue the melodic line for measures 5 through 12.

Chorale & Tuning Exercises in a minor (Concert c minor)

Interval Tuning

1 Intervals from tonic (minor 3rd, perfect 4th, perfect 5th)

Chord Tuning

Greensleeves (full band)

Chorale & Tuning Exercises in E (Concert G)

Interval Tuning

1 Intervals from tonic (major 3rd, perfect 4th, perfect 5th)

Chord Tuning

Pavane (full band)

Chorale & Tuning Exercises in e minor (Concert g minor)

Interval Tuning

1 Intervals from tonic (minor 3rd, perfect 4th, perfect 5th)

Chord Tuning

The Queenie's Alman (full band)

Chorale & Tuning Exercises in F (Concert Ab)

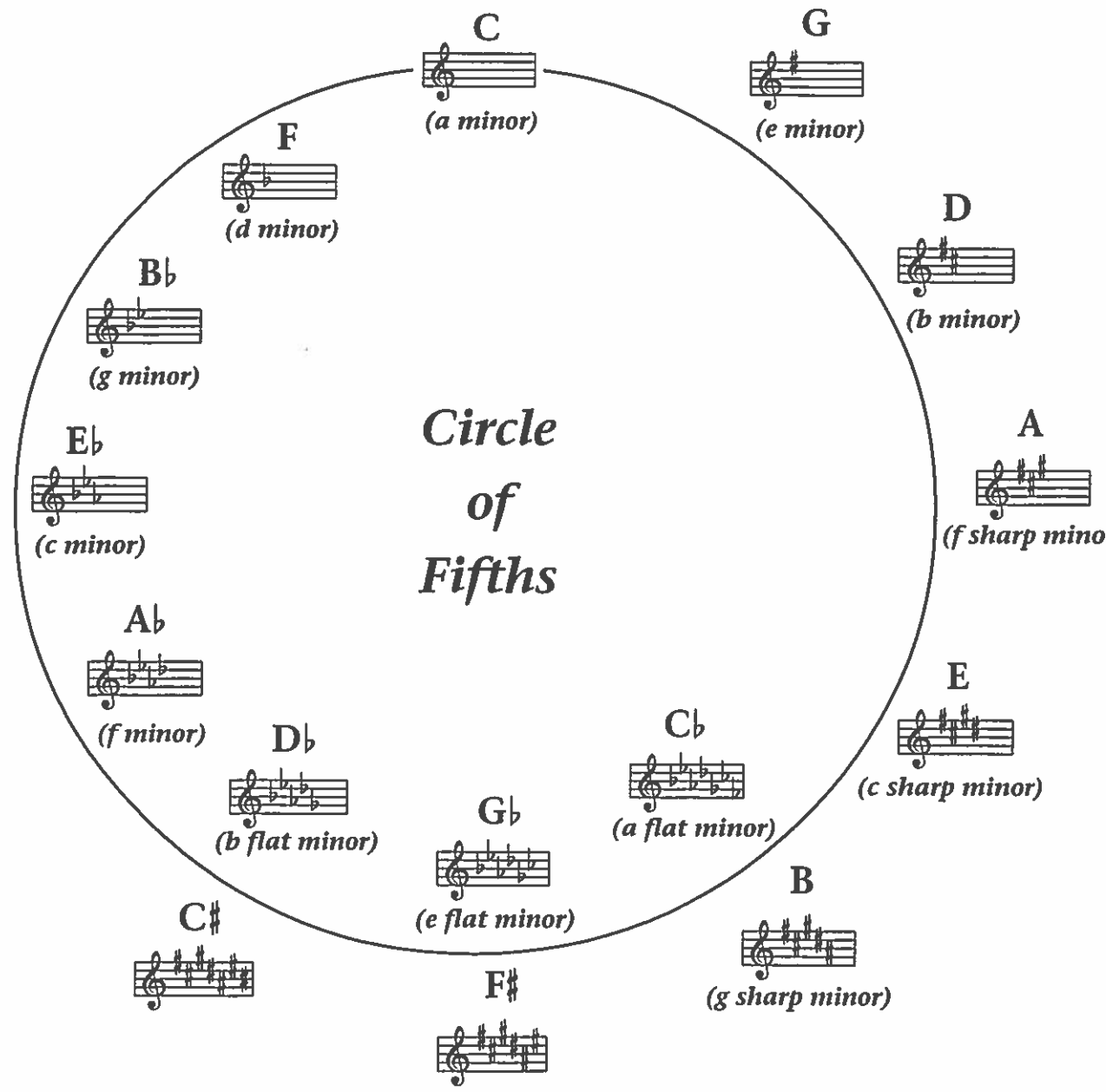
Interval Tuning

1 Intervals from tonic (major 3rd, perfect 4th, perfect 5th)

Chord Tuning

All Through the Night (full band)

Appendix



One Octave Scales & Arpeggios

In All Twelve Major Key Signatures

B \flat /G



Musical notation for the B-flat/G scale in treble clef, common time. The scale consists of two phrases: an ascending phrase starting on G4 and ending on G5, and a descending phrase starting on G5 and ending on G4. The key signature has one flat (B-flat).

F/D



Musical notation for the F/D scale in treble clef, common time. The scale consists of two phrases: an ascending phrase starting on F4 and ending on F5, and a descending phrase starting on F5 and ending on F4. The key signature has one flat (F).

C/A



Musical notation for the C/A scale in treble clef, common time. The scale consists of two phrases: an ascending phrase starting on C4 and ending on C5, and a descending phrase starting on C5 and ending on C4. The key signature has no sharps or flats (C).

G/E



Musical notation for the G/E scale in treble clef, common time. The scale consists of two phrases: an ascending phrase starting on G4 and ending on G5, and a descending phrase starting on G5 and ending on G4. The key signature has two sharps (F# and C#).

D/B



Musical notation for the D/B scale in treble clef, common time. The scale consists of two phrases: an ascending phrase starting on D4 and ending on D5, and a descending phrase starting on D5 and ending on D4. The key signature has two sharps (F# and C#).

A/E#



Musical notation for the A/E sharp scale in treble clef, common time. The scale consists of two phrases: an ascending phrase starting on A4 and ending on A5, and a descending phrase starting on A5 and ending on A4. The key signature has three sharps (F#, C#, and G#).

A/G#



Musical notation for the A/G sharp scale in treble clef, common time. The scale consists of two phrases: an ascending phrase starting on A4 and ending on A5, and a descending phrase starting on A5 and ending on A4. The key signature has three sharps (F#, C#, and G#).

E/D#



Musical notation for the E/D sharp scale in treble clef, common time. The scale consists of two phrases: an ascending phrase starting on E4 and ending on E5, and a descending phrase starting on E5 and ending on E4. The key signature has three sharps (F#, C#, and G#).

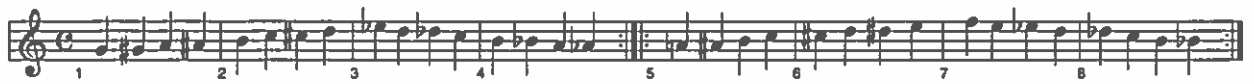
B/A#



Musical notation for the B/A sharp scale in treble clef, common time. The scale consists of two phrases: an ascending phrase starting on B4 and ending on B5, and a descending phrase starting on B5 and ending on B4. The key signature has three sharps (F#, C#, and G#).



Chromatic Exercises



G Chromatic Scale (Concert Bb)



D Chromatic Scale (Concert F)



Full Range Scales

In All Twelve Major Key Signatures


Bb/G  Musical staff for the Bb/G scale in C major. The scale is written in treble clef with a common time signature. The notes are: Bb, A, G, F, E, D, C, B, A, G, F, E, D, C, Bb.

F/D  Musical staff for the F/D scale in C major. The scale is written in treble clef with a common time signature. The notes are: F, G, A, Bb, C, D, E, F, G, A, Bb, C, D, E, F.

C/A  Musical staff for the C/A scale in C major. The scale is written in treble clef with a common time signature. The notes are: C, D, E, F, G, A, B, C, B, A, G, F, E, D, C.

G/E  Musical staff for the G/E scale in C major. The scale is written in treble clef with a common time signature. The notes are: G, A, B, C, D, E, F, G, A, B, C, D, E, F, G.

D/B  Musical staff for the D/B scale in C major. The scale is written in treble clef with a common time signature. The notes are: D, E, F, G, A, B, C, D, E, F, G, A, B, C, D.

A/F#  Musical staff for the A/F# scale in C major. The scale is written in treble clef with a common time signature. The notes are: A, B, C, D, E, F#, G, A, B, C, D, E, F#, G, A.

For saxes with high F#/Gb keys.

 Musical staff for the high F#/Gb scale in C major. The scale is written in treble clef with a common time signature. The notes are: F#, G, A, B, C, D, E, F#, G, A, B, C, D, E, F#.

A/Gb  Musical staff for the A/Gb scale in C major. The scale is written in treble clef with a common time signature. The notes are: A, B, C, D, E, F, Gb, A, B, C, D, E, F, Gb, A.

For saxes with high F#/Gb keys.

 Musical staff for the high F#/Gb scale in C major. The scale is written in treble clef with a common time signature. The notes are: F#, G, A, B, C, D, E, F#, G, A, B, C, D, E, F#.

E/D \flat 

B/A \flat 

G/E \flat 

D/B \flat 

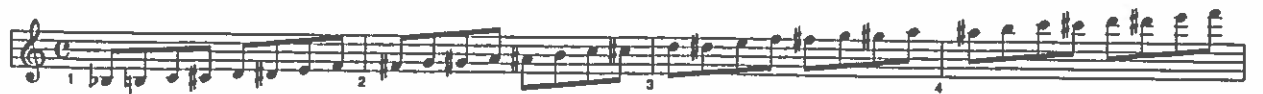
A/F 

E/C 

Full Range Chromatic - Saxophones Only



For saxes with high F/G keys.



Chromatic Scales*D^b/B^b*
D/B
E/C
E/D^b
F/D
G/E^b

G/E

Musical notation for the G/E exercise, consisting of two staves. The top staff is in treble clef and the bottom staff is in bass clef. The music features a sequence of triplets of eighth notes, with various accidentals (sharps, naturals, flats) indicating chromatic movement across the fretboard.

A/W

Musical notation for the A/W exercise, consisting of two staves. The top staff is in treble clef and the bottom staff is in bass clef. The music features a sequence of triplets of eighth notes, with various accidentals (sharps, naturals, flats) indicating chromatic movement across the fretboard.

A/F#

Musical notation for the A/F# exercise, consisting of two staves. The top staff is in treble clef and the bottom staff is in bass clef. The music features a sequence of triplets of eighth notes, with various accidentals (sharps, naturals, flats) indicating chromatic movement across the fretboard.

B/W

Musical notation for the B/W exercise, consisting of a single staff in treble clef. The music features a sequence of triplets of eighth notes, with various accidentals (sharps, naturals, flats) indicating chromatic movement across the fretboard.

B/A

Musical notation for the B/A exercise, consisting of a single staff in treble clef. The music features a sequence of triplets of eighth notes, with various accidentals (sharps, naturals, flats) indicating chromatic movement across the fretboard.

C/A

Musical notation for the C/A exercise, consisting of a single staff in treble clef. The music features a sequence of triplets of eighth notes, with various accidentals (sharps, naturals, flats) indicating chromatic movement across the fretboard.

For Saxophones Only

Musical notation for the Saxophones Only exercise, consisting of a single staff in treble clef. The music features a sequence of triplets of eighth notes, with various accidentals (sharps, naturals, flats) indicating chromatic movement across the fretboard.

Musical notation for the Saxophones Only exercise, consisting of a single staff in treble clef. The music features a sequence of triplets of eighth notes, with various accidentals (sharps, naturals, flats) indicating chromatic movement across the fretboard.

Major Arpeggios & Inversions

This musical score displays twelve major arpeggios and their inversions, each on a separate staff. The arpeggios are: B \flat /G, F/D, C/A, G/E, D/B, A/F \sharp , A/G \flat , E/D \flat , B/A \flat , G/ \flat E \flat , D/ \flat B \flat , and A/ \flat F. Each staff begins with a treble clef and a common time signature (C). The notes are written in a sequence that starts with the root note, followed by the third, fifth, and seventh notes, and then returns to the root. The key signature for each staff is indicated by the number of sharps or flats at the beginning of the staff.

Scale and Chord Related Theory

A scale is a series of single notes which ascend or descend in a stepwise manner within the range of an octave.

Because scales are arranged in a stepwise manner, the note names will always be in alphabetical order.

The notes within scales have a specific whole step/half step intervallic relationship with each other.

C major scale (half steps are between scale degrees 3 - 4 and 7 - 8).

Intervals: W W H W W W H

Scale Degrees: 1 2 3 4 5 6 7 8

Tonic Dominant Leading Tone

C natural minor scale (lower the 3rd, 6th, and 7th scale degrees a half step).

Intervals: W H W W H W W

Scale Degrees: 1 2 3 4 5 6 7 8

C harmonic minor scale (lower the 3rd and 6th scale degrees a half step).

Intervals: W H W W H W+H H

Scale Degrees: 1 2 3 4 5 6 7 8

C melodic minor scale (ascending lower the 3rd and descending lower the 7th, 6th, and 3rd scale degrees a half step).

Intervals: W H W W W W H W W H W W H W

Scale Degrees: 1 2 3 4 5 6 7 8 7 6 5 4 3 2 1

Augmented & Diminished Intervals from C

Augmented 4th (tritone)

Diminished 5th (tritone)

Augmented 5th

Intervals of the C major scale:

Major 2nd Major 3rd Perfect 4th Perfect 5th Major 6th Major 7th Perfect Octave

Minor Intervals from C

minor 2nd

minor 3rd

minor 6th

minor 7th

C major triad (three note chord) in root position and inversions.

Root Position First Inversion Second Inversion

From Bottom: root-third-fifth From Bottom: third-fifth-root From Bottom: fifth-root-third

Essential Vocabulary:

Interval - the distance between two notes

Half Step - the closest interval between two notes

Whole Step - an interval of two half steps

Third - the distance of two adjacent lines or two adjacent spaces

Scale Degree - a note's classification according to its position in the scale

Tonic - the first note of a scale, the "key-note" from which the scale takes its name

Dominant - the fifth scale degree, chords built on this note are "dominant" and normally resolve to the tonic

Leading Tone - the seventh scale degree, it is one half step below tonic and its tendency is to "lead" or rise to the tonic

Basic chord types constructed from C:

Major Minor (lower third) Diminished (lower third & fifth)

Augmented (raise fifth) Sus 4 (fourth replaces third)