

Soundtrack Highlights from ROGUE ONE: A STAR WARS STORY

(Guardians of the Whills Suite • The Imperial Suite • Your Father Would Be Proud • Jyn Erso & Hope Suite)

B \flat BASS CLARINET

Music by **MICHAEL GIACCHINO**

Arranged by **PAUL MURTHA**

"Guardians of the Whills Suite"

Religioso – freely

In Tempo

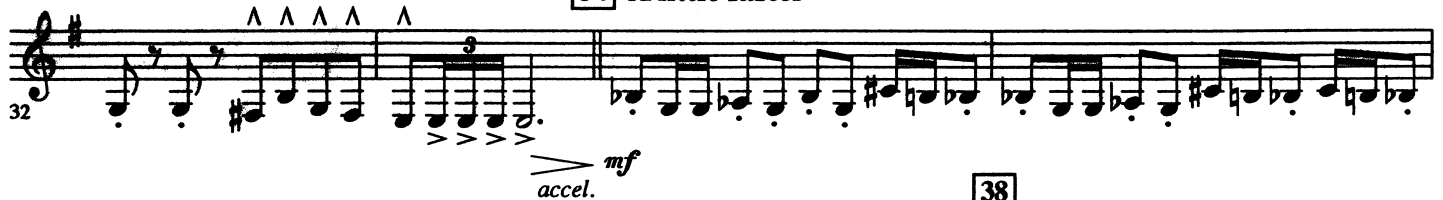


"The Imperial Suite"
Determined

15



34 **A little faster**



B \flat BASS CLARINET

43 46

fp *rit.* *f* *a tempo*

Detailed description: Musical staff for measures 43-46. Measure 43 starts with a treble clef and a key signature of one sharp (F#). The melody consists of eighth and quarter notes. Measure 46 is boxed. Dynamics include *fp* (fortissimo piano), *rit.* (ritardando), *f* (forte), and *a tempo* (return to original tempo). Accents are present over several notes.

49

ff *fff* *rit.*

Detailed description: Musical staff for measures 49-53. The melody continues with eighth and quarter notes. Dynamics include *ff* (fortissimo) and *fff* (fortississimo). The piece concludes with a *rit.* (ritardando) and a double bar line.

"Your Father Would Be Proud"

54 **Reverently**

mp *rit.* *a tempo* *mf* *mp* **2**

Detailed description: Musical staff for measures 54-58. The melody is primarily composed of half notes. Measure 58 ends with a first ending bracket and a second ending bracket labeled '2'. Dynamics include *mp* (mezzo piano), *rit.* (ritardando), *a tempo* (return to original tempo), *mf* (mezzo forte), and *mp* (mezzo piano).

"Jyn Erso & Hope Suite"

65 **With Longing**

mf *accel.* *f*

Detailed description: Musical staff for measures 65-71. The melody features a mix of quarter and eighth notes. Dynamics include *mf* (mezzo forte), *accel.* (accelerando), and *f* (forte).

72 **Building, with Intensity**

75 80

a tempo *p* *sfz* *mp* *fff* *molto rit.*

Detailed description: Musical staff for measures 75-80. Measure 75 starts with a treble clef and a key signature of one sharp (F#). The melody consists of eighth and quarter notes. Measure 80 is boxed. Dynamics include *a tempo* (return to original tempo), *p* (piano), *sfz* (sforzando), *mp* (mezzo piano), *fff* (fortississimo), and *molto rit.* (molto ritardando).

85 **With Purpose**

83

accel. *f* *fp* *f* *f*

Detailed description: Musical staff for measures 83-89. The melody features quarter and eighth notes. Dynamics include *accel.* (accelerando), *f* (forte), *fp* (fortissimo piano), and *f* (forte).

96 **Determined**

92

rit. *f* *ff* *f*

Detailed description: Musical staff for measures 92-97. The melody consists of quarter and eighth notes. Dynamics include *rit.* (ritardando), *f* (forte), *ff* (fortissimo), and *f* (forte).

98

ff *fff*

Detailed description: Musical staff for measures 98-103. The melody consists of quarter and eighth notes. Dynamics include *ff* (fortissimo) and *fff* (fortississimo).