

Selections from
MOANA

Alto Sax 2nd part

(Where You Are * How Far I'll Go * You're Welcome * We Know the Way)

Arranged by JOHNNIE VINSON

Moderately Fast

7 "Where You Are"

Musical score for the first section, "Where You Are". It consists of five staves of music in 4/4 time. The tempo is "Moderately Fast". The score includes dynamic markings such as *f*, *mp*, and *mf*. Measure numbers 7, 16, 24, and 32 are indicated in boxes. The music features a mix of eighth and quarter notes, with some rests and slurs.

39 "How Far I'll Go"
Slower

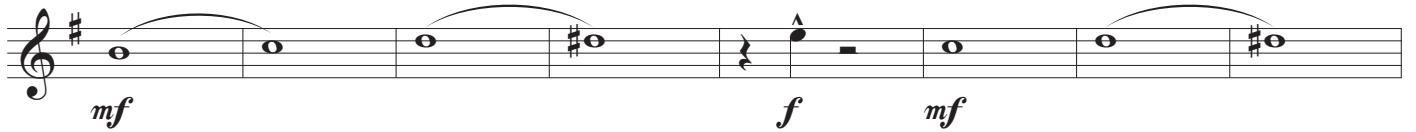
Musical score for the second section, "How Far I'll Go". It consists of four staves of music in 4/4 time. The tempo is "Slower". The score includes dynamic markings such as *mp* and *mf*. Measure numbers 39, 47, 51, and 59 are indicated in boxes. The music features a mix of eighth and quarter notes, with some rests and slurs. The key signature changes to two sharps (F# and C#) at the end of the section.



69 *Moderate Swing!*



77 "You're Welcome"



85



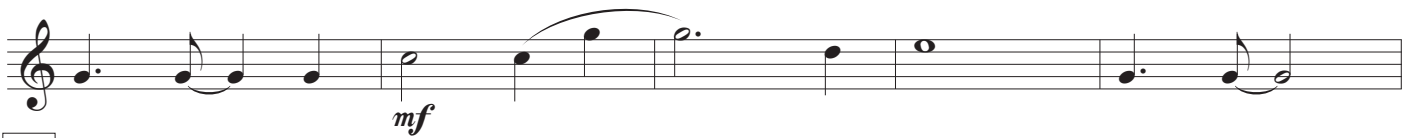
93



(Even 8ths)

97 Moderately Slow

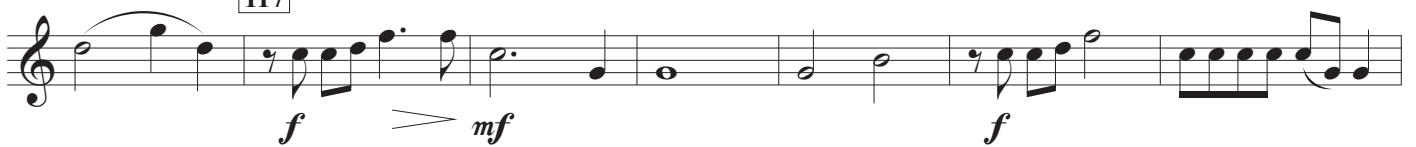
101 "We Know the Way"



109



117



Selections from
MOANA

Alto Sax 3

(Where You Are * How Far I'll Go * You're Welcome * We Know the Way)

Arranged by JOHNNIE VINSON

Moderately Fast

7 "Where You Are"

Musical notation for measures 1-15 of "Where You Are". The piece is in 4/4 time and begins with a dynamic of *f*. A hairpin crescendo leads to a dynamic of *mp* at measure 7. The notation includes a fermata over measure 2 and various rhythmic patterns.

Musical notation for measures 16-23 of "Where You Are". Measure 16 is marked with a box containing the number 16. Dynamics include *mf*, *mp*, and *mf*.

Musical notation for measures 24-31 of "Where You Are". Measure 24 is marked with a box containing the number 24. Dynamics include *mf* and *f*.

Musical notation for measures 32-38 of "Where You Are". Measure 32 is marked with a box containing the number 32. Dynamics include *mf*, *f*, and *mf*.

Musical notation for measures 39-38 of "How Far I'll Go". Measure 39 is marked with a box containing the number 39. The tempo is marked "Slower". Dynamics include *f*, *mf*, and *f*.

Musical notation for measures 39-46 of "How Far I'll Go". Measure 39 is marked with a box containing the number 39. The tempo is marked "Slower". Dynamics include *mp*.

Musical notation for measures 47-58 of "How Far I'll Go". Measure 47 is marked with a box containing the number 47. Dynamics include *mp*, *mf*, and *mp*.

Musical notation for measures 59-66 of "How Far I'll Go". Measure 59 is marked with a box containing the number 59. Dynamics include *mf*.

Musical notation for measures 67-74 of "How Far I'll Go". The piece concludes in 2/4 time with a dynamic of *f*.

69 **Moderate Swing!**

77 *"You're Welcome"*

85

93

(Even 8ths)
97 **Moderately Slow**

101 *"We Know the Way"*

109

117