

to my daughter, Hannah

JOY

FOR CONCERT BAND

FRANK TICHELI

Mallets
Glockenspiel, Xylophone

Lively (♩ = 120-138) **6** **10**
 4 GLOCKENSPIEL to Xylo. 3 XYLO. > > >

mf *f*

12 **14** 4 **18** (Xylo.) *f*

20 2 (Xylo.) *cresc.* **24** to Glock. *ff* rit. 2

28 Slightly slower **34** 2 GLOCK. *mp* accel. **39** Tempo I (♩ = 120-138) *ff*

40 rit.

46 **47** a tempo **51** *f* *mp*

52 **55** to Xylo. 3 XYLO. > > > *p* *mf* *f*

60

64 4 **68** 4 **72** (Xylo.) *ff* *mf* *ff* > *gliss.*

Copyright © 2005 Manhattan Beach Music / All Rights Reserved — Printed and engraved in the United States of America

Go to www.FrankTicheli.com for the latest information on The Music of Frank Ticheli

Go to www.ManhattanBeachMusic.com & www.BestMusicSeries.com
to hear composers, see videos, download soundfiles and purchase music

to my daughter, Hannah

JOY

FOR CONCERT BAND

FRANK TICHELI

Percussion 1 (Two Players)
Triangle, Crash Cymbals
Suspended Cymbal
Snare Drum (snare off)

Lively ($\text{♩} = 120-138$)

6 TRIANGLE *p* *mf* to Crash Cym. 3 10 CRASH CYMBALS *f*

12 (Crash Cym.) to Sus. Cym. 14 18 5 SUSPENDED CYMBAL 24 *p* *ff* *l.v.* to Tri.

25 rit. 28 Slightly slower 34 3 accel. 2 39 Tempo I ($\text{♩} = 120-138$) TRIANGLE *ff* (Horns, Tpt.2)

40

45 rit. 47 a tempo *mp* CRASH CYMBALS SNARE DRUM (snare off) *f* *(f)* *l.v.*

49 51 to Tri. 3 TRIANGLE *p*

55 59 to Crash Cym. 3 CRASH CYMBALS *mf* *f* to Sus. Cym. 2

64 68 72 SUSPENDED CYMBAL *mp* *ff* choke (Timp.)

Copyright © 2005 Manhattan Beach Music / All Rights Reserved — Printed and engraved in the United States of America

Go to www.FrankTicheli.com for the latest information on The Music of Frank Ticheli

Go to www.ManhattanBeachMusic.com & www.BestMusicSeries.com
to hear composers, see videos, download soundfiles and purchase music

to my daughter, Hannah

JOY

FOR CONCERT BAND

FRANK TICHELI

Percussion 2 (One Player)
Bass Drum, Woodblock

Lively ($\text{♩} = 120-138$) 6 10

$\frac{4}{4}$ BASS DRUM (B.D.)

f

13 to Woodblock 14 18 WOODBLOCK 2 (Woodblock)

f

23 to B.D. 24 2 rit. 28 Slightly slower 34 3 accel. 2

(Horns, Tpt.2)

39 - Tempo I ($\text{♩} = 120-138$) 47

BASS DRUM. (B.D.) rit. a tempo (B.D.)

ff *f*

48 51 4 55 4

59 (B.D.) 64 4 68 2 (Timp.)

f

70 (B.D.) 72 *l.v.* dampen *f*

p *ff*

Copyright © 2005 Manhattan Beach Music / All Rights Reserved — Printed and engraved in the United States of America

Go to www.FrankTicheli.com for the latest information on The Music of Frank Ticheli

Go to www.ManhattanBeachMusic.com & www.BestMusicSeries.com
to hear composers, see videos, download soundfiles and purchase music

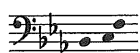
to my daughter, Hannah

JOY

FOR CONCERT BAND

FRANK TICHELI

Timpani

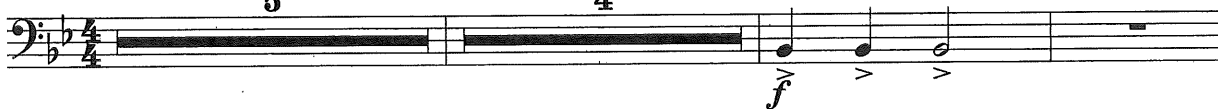


Lively (♩ = 120-138)
5

6

4

10



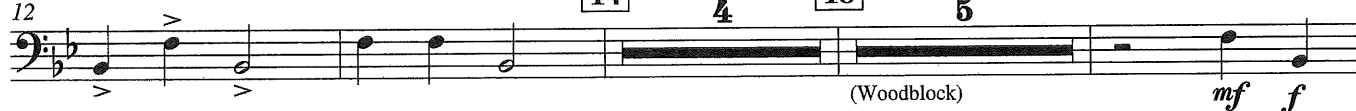
12

14

4

18

5



28

rit. — — — Slightly slower

2

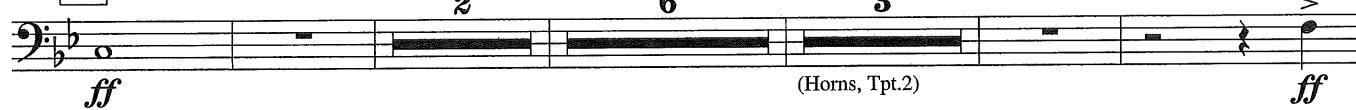
6

3

accel. — — —

24

(Horns, Tpt.2)

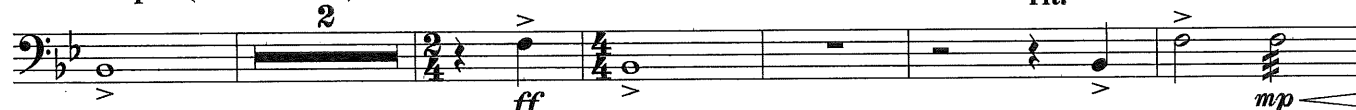


39

Tempo I (♩ = 120-138)

2

rit. — — —



47

a tempo



51

4

55

4

59



64

4

68



71

72

Solo

dampen



Copyright © 2005 Manhattan Beach Music / All Rights Reserved — Printed and engraved in the United States of America

Go to www.FrankTicheli.com for the latest information on The Music of Frank Ticheli

Go to www.ManhattanBeachMusic.com & www.BestMusicSeries.com
to hear composers, see videos, download soundfiles and purchase music