

From the Walt Disney/Pixar film BRAVE

Highlights from BRAVE

Alto Sax. 1

Arranged by SEAN O'LOUGHLIN

"Fate and Destiny" Misterioso

Musical notation for the first system of "Fate and Destiny". It begins with a treble clef, a key signature of one flat (B-flat), and a 4/4 time signature. The melody consists of eighth and quarter notes with slurs. A dynamic marking of *p* (piano) is placed below the first measure.

10 "Touch the Sky" Quickly

Musical notation for the second system of "Touch the Sky". It starts with a treble clef, a key signature of one flat, and a 6/8 time signature. The melody is more rhythmic with eighth notes. A dynamic marking of *p* (piano) is at the start, and *f* (forte) and *mf* (mezzo-forte) are later in the system.

Musical notation for the third system of "Touch the Sky". It continues the melody with various dynamics including *f* and *mf*.

Musical notation for the fourth system of "Touch the Sky". It includes a section marked "30 In 1" with a key signature change to two flats (B-flat and E-flat) and a 3/4 time signature. Dynamics include *f* and *mf*.

46

Musical notation for the fifth system of "Touch the Sky". It continues the melody in the 3/4 time signature with a dynamic marking of *mf*.

58

Musical notation for the sixth system of "Touch the Sky". It continues the melody with a dynamic marking of *mf*.

Musical notation for the seventh system of "Touch the Sky". It includes a section marked "66" with a key signature change to one flat and a 4/4 time signature. Dynamics include *f* and *mf*. The word "Trompas" is written above the first measure and "Toca" above the 66th measure.

72

Musical notation for the eighth system of "Touch the Sky". It continues the melody with dynamics *mf* and *mp* (mezzo-piano). The word "rit." (ritardando) is written above the final measure.

86

Musical notation for the ninth system, titled "Noble Maiden Fair". It starts with a treble clef, a key signature of one flat, and a 4/4 time signature. The melody is slower and features a dynamic marking of *p* (piano). A section marked "94 Solo" begins with a key signature change to two sharps (F# and C#) and a 3/8 time signature.

Slower

mp

110 Trompa 1

Musical notation for the tenth system of "Noble Maiden Fair". It continues the melody in the 3/8 time signature with a dynamic marking of *mf*.

NOBLE MAIDEN FAIR (A Mhaighdean Bhan Uasal)
 Music by PATRICK DOYLE
 Lyrics by PATRICK NEIL DOYLE
 ©2012 Walt Disney Music Company and Pixar Talking Pictures
 This arrangement © 2013 Walt Disney Music Company and Pixar Talking Pictures
 All Rights Reserved Used by Permission

TOUCH THE SKY
 Music by ALEXANDER L. MANDEL
 Lyrics by ALEXANDER L. MANDEL and MARK ANDREWS
 ©2012 Walt Disney Music Company and Pixar Talking Pictures
 This arrangement © 2013 Walt Disney Music Company and Pixar Talking Pictures
 All Rights Reserved Used by Permission

FATE AND DESTINY
 By PATRICK DOYLE
 ©2012 Walt Disney Music Company and Pixar Talking Pictures
 This arrangement © 2013 Walt Disney Music Company and Pixar Talking Pictures
 All Rights Reserved Used by Permission

Alto Sax. 1

118 *mf* 126 *mf* Slower

130 "The Games" Faster *p* *mf* *p* *f* *mf* 134

142 *f* *mf*

154 *f* *f* *mf* 162

171 "Merida's Home" Faster *mf* *p* *mf* *p* *mf* *p* 181

189 *mf* *p* *mf* *p* 7 *p* *mf* 197

205 *p* *mf* *p*

213 *mf* *p* *f*

p *f*

From the Walt Disney/Pixar film BRAVE
Highlights from BRAVE

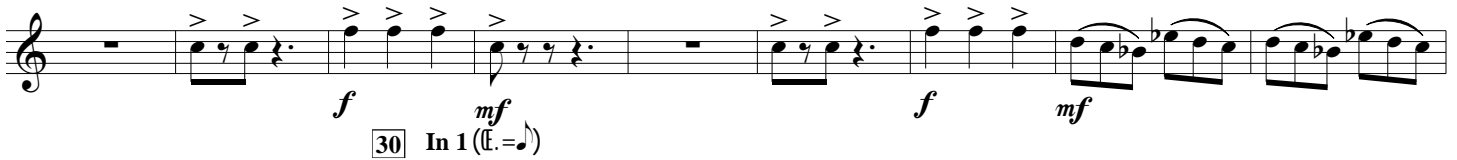
Alto Sax. 2

Arranged by SEAN O'LOUGHLIN

"Fate and Destiny"
 Misterioso



10 "Touch the Sky"
 Quickly



30 In 1 (f. = ♩)



NOBLE MAIDEN FAIR (A Mhaighdean Bhan Uasal)
 Music by PATRICK DOYLE
 Lyrics by PATRICK NEIL DOYLE
 ©2012 Walt Disney Music Company and Pixar Talking Pictures
 This arrangement © 2013 Walt Disney Music Company and Pixar Talking Pictures
 All Rights Reserved Used by Permission

TOUCH THE SKY
 Music by ALEXANDER L. MANDEL
 Lyrics by ALEXANDER L. MANDEL and MARK ANDREWS
 ©2012 Walt Disney Music Company and Pixar Talking Pictures
 This arrangement © 2013 Walt Disney Music Company and Pixar Talking Pictures
 All Rights Reserved Used by Permission

FATE AND DESTINY
 By PATRICK DOYLE
 ©2012 Walt Disney Music Company and Pixar Talking Pictures
 This arrangement © 2013 Walt Disney Music Company and Pixar Talking Pictures
 All Rights Reserved Used by Permission

118 *mf* 126 Slower 4 *mf* *p* 130 "The Games" Faster *mf*

134 *p* *f* *mf*

142 *f* *mf*

154 *f* *mf*

162 *f* *mf*

171 "Merida's Home" Faster 181

189 7 *mf* *p* *mf* *p* *mf* *p*

197 *p* *mf*

205 *p* *mf*

213 *p* *f*

p *f*